

ILSIEC

ILLINOIS STATEWIDE INTEROPERABILITY
EXECUTIVE COMMITTEE

Statewide Interoperability Template (SWIT)

**Adopted by the Authority
of the
Illinois Statewide Interoperability
Executive Committee**

September 16, 2021

Updated: April 27, 2022

SIEC Technology Sub-Committee

IL STATEWIDE INTEROPERABILITY TEMPLATE (SWIT) VHF/UHF/700/800/STARCOM21 PROGRAMMING GUIDE

Approved: 16-Sep-2021

Updated: 27-Apr-2022

The Illinois Statewide Interoperability Template (SWIT) has been created and is maintained by the Technology Sub-Committee under the authority of, and approved by, the Illinois Statewide Interoperability Executive Committee (ILSIEC).

Questions concerning the SWIT can be forwarded to the Illinois Statewide Interoperability Coordinator (SWIC) by calling the IEMA Operations Center at 217-782-7860 or emailing ema.swic@illinois.gov.

General Notes:

1. Appropriate state and national interoperable channels should be programmed into all public safety portable and mobile radios. Recommended zones shown in this document are intended for 16 channel per zone portable radios. Departments with higher capacity mobile radios may desire to program all appropriate VHF and/or UHF interoperability channels in a single I/O (Interoperability) zone. 700/800 MHz interoperability zones should follow the SWIT-BC through SWIT-BY template as published within this document.
2. Not all radios in use today will be capable of using the P25 digital or secure (encrypted) channels listed in this document. Agencies should ensure that all appropriate channels for use by their discipline, that the radio is capable of, are programmed.
3. Per FCC rule, if a radio is programmed with any of the 700 MHz interoperability channels, the radio must be programmed to operate on all of the nationwide narrowband interoperability channels. (47 CFR 90.547)
4. All 700/800 MHz mobile and portable radios should be programmed with the 700/800 MHz interoperability channels contained herein, regardless if they are using STARCOM21 or other primary radio system.
5. Tone (CTCSS) frequencies listed in the table are in Hertz (Hz). A "D" followed by a three digit number represents a Digital Coded Squelch (DCS) code. For example D156 is DCS code 156 (normal). No inverted DCS codes are utilized.
6. All STARCOM21 radios used by field personnel must be programmed with the Calling, Incident A, Incident B and Reserve zones.
7. Encrypted channels listed in this template require P25 digital radios with AES-256 multi-key hardware encryption.
8. All new radios purchased for use on the STARCOM21 system must be equipped with AES-256 multi-key encryption. All AES-256 multi-key equipped field radios must be programmed with the SECURE A and SECURE B and SWIT-BY zones.
9. The following color coding is used in the non-trunked portion of this document to assist with identification of conventional analog, P25 digital and P25 digital secure (encrypted) channels:

Conventional Analog

P25 Digital

P25 Digital Secure

10. P25 NAC codes listed in the following tables are presented in a hexadecimal format. The Talkgroup ID for all P25 channels should be programmed as Hex \$00001. Radios should be programmed to receive any talkgroup ID on the conventional channels.
11. Programming of encryption keys must be in compliance with SIEC policies and procedures. Law enforcement, fire and 9-1-1 keys have special restrictions. SIEC encryption keys must be used; local encryption keys are not permitted on SWIT defined interoperable frequencies.
12. Channel positions labeled "RESERVED" should remain unprogrammed in radios. This will permit COM-L and/or COM-T reprogramming in the field to meet the needs of a major incident or event.
13. For the VFED-IR, VFED-LE and UFED-LE channels identified in the SWIT with encryption as "Selectable", be advised that encryption is optional and may be used. If desired, radios should be programmed for selectable encryption with the SLN/CKR identified in the SWIT.
14. Initial and ongoing training for interoperable communications is imperative for successful outcomes of major incidents, disasters and events. All public safety radio users should receive adequate initial and annual training regarding the SWIT and the operation of their communications equipment.

IL-SIEC STATEWIDE INTEROPERABILITY TEMPLATE (SWIT)

PROGRAMMING GUIDE

VCALL

Channel Position	Front Display	Top Display	Receive Frequency	Receive Tone/NAC	Transmit Frequency	Transmit Tone/NAC	P25 Digital	Encrypted	SLN/CKR
1	VCALL10	VCALL10	155.7525	156.7	155.7525	156.7	No	No	N/A
2	VTAC11	VTAC11	151.1375	156.7	151.1375	156.7	No	No	N/A
3	VTAC12	VTAC12	154.4525	156.7	154.4525	156.7	No	No	N/A
4	VTAC13	VTAC13	158.7375	156.7	158.7375	156.7	No	No	N/A
5	VTAC14	VTAC14	159.4725	156.7	159.4725	156.7	No	No	N/A
6	VTAC33	VTAC33	159.4725	156.7	151.1375	136.5	No	No	N/A
7	VTAC34	VTAC34	158.7375	156.7	154.4525	136.5	No	No	N/A
8	VTAC35	VTAC35	159.4725	156.7	158.7375	136.5	No	No	N/A
9	VTAC36	VTAC36	151.1375	156.7	159.4725	136.5	No	No	N/A
10	VTAC37	VTAC37	154.4525	156.7	158.7375	136.5	No	No	N/A
11	VTAC38	VTAC38	158.7375	156.7	159.4725	136.5	No	No	N/A
12	STL CALL	STL CALL	171.4375	\$28D	162.8750	\$28D	Yes	No	N/A
13	STL TAC	STL TAC	171.6875	\$28D	163.8375	\$28D	Yes	No	N/A
14	IEMA VHF1	VHF 1	155.9250	CSQ	155.9250	CSQ	No	No	N/A
15	ESMARN	ESMARN	155.0250	123.0	155.0250	123.0	No	No	N/A
16	IREACH	IREACH	155.0550	D156	155.0550	D156	No	No	N/A

Notes: ESMARN and IREACH channels require local FCC radio authorizations at this time. IEMA VHF1 authorization is held by the State of Illinois.

STL CALL and STL TAC are part of the Federal 25 Cities interoperability plan for the St. Louis MO metro area as managed by the Federal Bureau of Investigation. These channels are for interdisciplinary coordination between Federal agencies and state and local public safety agencies.

VLAW

Channel Position	Front Display	Top Display	Receive Frequency	Receive Tone/NAC	Transmit Frequency	Transmit Tone/NAC	P25 Digital	Encrypted	SLN/CKR
1	ISPERN	ISPERN	155.4750	CSQ	155.4750	D156	No	No	N/A
2	IREACH	IREACH	155.0550	D156	155.0550	D156	No	No	N/A
3	ISP HF4	ISP HF4	155.4600	CSQ	155.4600	CSQ	No	No	N/A
4	ESMARN	ESMARN	155.0250	123.0	155.0250	123.0	No	No	N/A
5	VLAW31	VLAW31	155.4750	CSQ	155.4750	156.7	No	No	N/A
6	VLAW32	VLAW32	155.4825	CSQ	155.4825	156.7	No	No	N/A
7	RESERVED								
8	RESERVED								
9	RESERVED								
10	RESERVED								
11	RESERVED								
12	RESERVED								
13	RESERVED								
14	RESERVED								
15	RESERVED								
16	RESERVED								

Notes: ISPERN is governed by rules and regulations promulgated by the Illinois State Police and the State Police Radio Act.

ISPERN, VLAW31 and VLAW32 are restricted to Law Enforcement use only.

ESMARN and IREACH channels require local FCC radio authorizations at this time.

IL-SIEC STATEWIDE INTEROPERABILITY TEMPLATE (SWIT) PROGRAMMING GUIDE

VFIRE

Channel Position	Front Display	Top Display	Receive Frequency	Receive Tone/NAC	Transmit Frequency	Transmit Tone/NAC	P25 Digital	Encrypted	SLN/CKR
1	IFERN	IFERN	154.2650	210.7	154.2650	210.7	No	No	N/A
2	IFERN2	IFERN2	154.3025	67.0	154.3025	67.0	No	No	N/A
3	VFIRE21	VFIRE21	154.2800	CSQ	154.2800	156.7	No	No	N/A
4	VFIRE22	VFIRE22	154.2650	CSQ	154.2650	156.7	No	No	N/A
5	VFIRE23	VFIRE23	154.2950	CSQ	154.2950	156.7	No	No	N/A
6	VFIRE24	VFIRE24	154.2725	CSQ	154.2725	156.7	No	No	N/A
7	VFIRE25	VFIRE25	154.2875	CSQ	154.2875	156.7	No	No	N/A
8	VFIRE26	VFIRE26	154.3025	CSQ	154.3025	156.7	No	No	N/A
9	IREACH	IREACH	155.0550	D156	155.0550	D156	No	No	N/A
10	ESMARN	ESMARN	155.0250	123.0	155.0250	123.0	No	No	N/A
11	GRAY FG	GRAY FG	154.2875	136.5	154.2875	136.5	No	No	N/A
12	BLACK FG	BLACK FG	154.2725	94.8	154.2725	94.8	No	No	N/A
13	GOLD FG	GOLD FG	153.8375	91.5	153.8375	91.5	No	No	N/A
14	BLUE FG	BLUE FG	154.2950	85.4	154.2950	85.4	No	No	N/A
15	WHITE FG	WHITE FG	154.2800	74.4	154.2800	74.4	No	No	N/A
16	RED FG	RED FG	153.8300	69.3	153.8300	69.3	No	No	N/A

Notes: VFIRE restricted to fire department use only.

IFERN, IFERN2 and FG (fireground) Channels restricted to MABAS member agencies. MABAS holds FCC authorization(s) for MABAS, IREACH & ESMARN frequencies for member agencies.)

VMED

Channel Position	Front Display	Top Display	Receive Frequency	Receive Tone/NAC	Transmit Frequency	Transmit Tone/NAC	P25 Digital	Encrypted	SLN/CKR
1	MERCI340	MERCI340	155.3400	CSQ	155.3400	210.7	No	No	N/A
2	MERCI400	MERCI400	155.4000	CSQ	155.4000	210.7	No	No	N/A
3	VMED28	VMED28	155.3400	CSQ	155.3400	156.7	No	No	N/A
4	VMED29	VMED29	155.3475	CSQ	155.3475	156.7	No	No	N/A
5	VSAR16	VSAR16	155.1600	127.3	155.1600	127.3	No	No	N/A
6	RESERVED								
7	RESERVED								
8	RESERVED								
9	RESERVED								
10	RESERVED								
11	RESERVED								
12	RESERVED								
13	RESERVED								
14	RESERVED								
15	RESERVED								
16	RESERVED								

Notes: VMED restricted to licensed emergency medical services providers only.

MERCI340 and MERCI400 channels require local FCC radio authorizations at this time.

IL-SIEC STATEWIDE INTEROPERABILITY TEMPLATE (SWIT)

PROGRAMMING GUIDE

VFED-IR

Channel Position	Front Display	Top Display	Receive Frequency	Receive Tone/NAC	Transmit Frequency	Transmit Tone/NAC	P25 Digital	Encrypted	SLN/CKR
1	NC 1	NC 1	169.5375	CSQ	164.7125	167.9	No	No	N/A
2	IR 1	IR 1	170.0125	CSQ	165.2500	167.9	No	No	N/A
3	IR 2	IR 2	170.4125	CSQ	165.9625	167.9	No	No	N/A
4	IR 3	IR 3	170.6875	CSQ	166.5750	167.9	No	No	N/A
5	IR 4	IR 4	173.0375	CSQ	167.3250	167.9	No	No	N/A
6	IR 5	IR 5	169.5375	CSQ	169.5375	167.9	No	No	N/A
7	IR 6	IR 6	170.0125	CSQ	170.0125	167.9	No	No	N/A
8	IR 7	IR 7	170.4125	CSQ	170.4125	167.9	No	No	N/A
9	IR 8	IR 8	170.6875	CSQ	170.6875	167.9	No	No	N/A
10	IR 9	IR 9	173.0375	CSQ	173.0375	167.9	No	No	N/A
11	CG-COM-N	CGCOM-N	170.8125	\$28D	163.6500	\$28D	Yes	Selectable	N/A
12	CG-COM-C	CGCOM-C	171.6875	\$28D	163.6500	\$28D	Yes	Selectable	N/A
13	CG-COM-S	CGCOM-S	171.4375	\$28D	163.6500	\$28D	Yes	Selectable	N/A
14	CG-TAC-N	CGTAC-N	168.8875	\$28D	163.7000	\$28D	Yes	Selectable	N/A
15	CG-TAC-C	CGTAC-C	172.2125	\$28D	163.7000	\$28D	Yes	Selectable	N/A
16	CG-TAC-S	CGTAC-S	168.9125	\$28D	163.7000	\$28D	Yes	Selectable	N/A

Notes: CG-COM and CG-TAC are part of the Federal 25 Cities interoperability plan for the Chicago metro area as managed by the Federal Bureau of Investigation. CG-COM and CG-TAC are comprised of a three-site multicast voted system. These channels are for interdisciplinary coordination between Federal agencies and state and local public safety agencies. Federal agencies occasionally utilize encryption on 25 cities.

VFED-LE

Channel Position	Front Display	Top Display	Receive Frequency	Receive Tone/NAC	Transmit Frequency	Transmit Tone/NAC	P25 Digital	Encrypted	SLN/CKR
1	LE A	LE A	167.0875	CSQ	167.0875	167.9	No	No	N/A
2	LE 1	LE 1	167.0875	CSQ	162.0875	167.9	No	No	N/A
3	LE 2	LE 2	167.2500	\$68F	162.2625	\$68F	Yes	Selectable	
4	LE 3	LE 3	167.7500	\$68F	162.8375	\$68F	Yes	Selectable	
5	LE 4	LE 4	168.1125	\$68F	163.2875	\$68F	Yes	Selectable	
6	LE 5	LE 5	168.4625	\$68F	163.4250	\$68F	Yes	Selectable	
7	LE 6	LE 6	167.2500	\$68F	167.2500	\$68F	Yes	Selectable	
8	LE 7	LE 7	167.7500	\$68F	167.7500	\$68F	Yes	Selectable	
9	LE 8	LE 8	168.1125	\$68F	168.1125	\$68F	Yes	Selectable	
10	LE 9	LE 9	168.4625	\$68F	168.4625	\$68F	Yes	Selectable	
11	CG-COM-N	CGCOM-N	170.8125	\$28D	163.6500	\$28D	Yes	Selectable	N/A
12	CG-COM-C	CGCOM-C	171.6875	\$28D	163.6500	\$28D	Yes	Selectable	N/A
13	CG-COM-S	CGCOM-S	171.4375	\$28D	163.6500	\$28D	Yes	Selectable	N/A
14	CG-TAC-N	CGTAC-N	168.8875	\$28D	163.7000	\$28D	Yes	Selectable	N/A
15	CG-TAC-C	CGTAC-C	172.2125	\$28D	163.7000	\$28D	Yes	Selectable	N/A
16	CG-TAC-S	CGTAC-S	168.9125	\$28D	163.7000	\$28D	Yes	Selectable	N/A

Notes: Federal LE channels restricted to Law Enforcement use only. LE2 through LE9 and 25 Cities are P25 digital

CG-COM and CG-TAC are part of the Federal 25 Cities interoperability plan for the Chicago metro area as managed by the Federal Bureau of Investigation. CG-COM and CG-TAC are comprised of a three-site multicast voted system. These channels are for interdisciplinary coordination between Federal agencies and state and local public safety agencies.

Federal agencies occasionally utilize encryption on 25 cities.

Some Federal LE channels may utilize AES256 encryption. Users authorized by a Federal agency may utilize the appropriate encryption key(s).

IL-SIEC STATEWIDE INTEROPERABILITY TEMPLATE (SWIT) PROGRAMMING GUIDE

UFED-LE

Channel Position	Front Display	Top Display	Receive Frequency	Receive Tone/NAC	Transmit Frequency	Transmit Tone/NAC	P25 Digital	Encrypted	SLN/CKR
1	LE B	LE B	414.0375	CSQ	414.0375	167.9	No	No	N/A
2	LE 10	LE 10	409.9875	CSQ	418.9875	167.9	No	No	N/A
3	LE 11	LE 11	410.1875	\$68F	419.1875	\$68F	Yes	Selectable	
4	LE 12	LE 12	410.6125	\$68F	419.6125	\$68F	Yes	Selectable	
5	LE 13	LE 13	414.0625	\$68F	414.0625	\$68F	Yes	Selectable	
6	LE 14	LE 14	414.3125	\$68F	414.3125	\$68F	Yes	Selectable	
7	LE 15	LE 15	414.3375	\$68F	414.3375	\$68F	Yes	Selectable	
8	LE 16	LE 16	409.9875	\$68F	409.9875	\$68F	Yes	Selectable	
9	LE 17	LE 17	410.1875	\$68F	410.1875	\$68F	Yes	Selectable	
10	LE 18	LE 18	410.6125	\$68F	410.6125	\$68F	Yes	Selectable	
11	RESERVED								
12	RESERVED								
13	RESERVED								
14	RESERVED								
15	RESERVED								
16	RESERVED								

Notes: Federal LE channels restricted to Law Enforcement use only.

LE11 through LE18 are P25 digital.

Some Federal LE channels may utilize AES256 encryption. Users authorized by a Federal agency may utilize the appropriate encryption key(s).

IL-SIEC STATEWIDE INTEROPERABILITY TEMPLATE (SWIT) PROGRAMMING GUIDE

700/800 MHz INTEROPERABILITY SPECIAL INFORMATION

Notes: The following information details the Primary Use for the 700/800 channels based on the embedded code within the channel name. For example: 8**CALL**90 is a "Calling Channel".

CALL	Calling Channel
TAC	General Public Safety - Tactical/Coordination
LAW	Law Enforcement
FIRE	Fire Department
EMS	Emergency Medical Services
GTAC	Other Public Service
MOB	Mobile Repeater
DATA	Mobile Data
AG	Air-Ground
FTAC	Fire Tactical (analog)
LTAC	Law Tactical (analog)
MTAC	EMS/Medical Tactical (analog)
US	National Itinerant - Convoy Operations (analog or digital)

AES-256 encryption is authorized on many 700 MHz interoperability frequencies. Zone SWIT-SECURE BY has been established to provide 700 MHz interoperable secure conventional communications in Illinois. Encryption for other 700 MHz frequencies/zones in Illinois is discouraged.

SWIT-BC

Channel Position	Front Display	Top Display	Receive Frequency	Receive Tone/NAC	Transmit Frequency	Transmit Tone/NAC	P25 Digital	Encrypted	SLN/CKR
1	8CALL90D	8CAL90D	851.0125	156.7	851.0125	156.7	No	No	N/A
2	8TAC91D	8TAC91D	851.5125	156.7	851.5125	156.7	No	No	N/A
3	8TAC92D	8TAC92D	852.0125	156.7	852.0125	156.7	No	No	N/A
4	8TAC93D	8TAC93D	852.5125	156.7	852.5125	156.7	No	No	N/A
5	8TAC94D	8TAC94D	853.0125	156.7	853.0125	156.7	No	No	N/A
6	8CALL90	8CALL90	851.0125	156.7	806.0125	156.7	No	No	N/A
7	8TAC91	8TAC91	851.5125	156.7	806.5125	156.7	No	No	N/A
8	8TAC92	8TAC92	852.0125	156.7	807.0125	156.7	No	No	N/A
9	8TAC93	8TAC93	852.5125	156.7	807.5125	156.7	No	No	N/A
10	8TAC94	8TAC94	853.0125	156.7	808.0125	156.7	No	No	N/A
11	RESERVED								
12	RESERVED								
13	RESERVED								
14	RESERVED								
15	RESERVED								
16	RESERVED								

Note: Zone SWIT-BC is equivalent to ITTF-BC.

IL-SIEC STATEWIDE INTEROPERABILITY TEMPLATE (SWIT)

PROGRAMMING GUIDE

SWIT-BD

Channel Position	Front Display	Top Display	Receive Frequency	Receive Tone/NAC	Transmit Frequency	Transmit Tone/NAC	P25 Digital	Encrypted	SLN/CKR
1	7CALL50D	7CAL50D	769.24375	\$F7E	769.24375	\$293	Yes	No	N/A
2	7TAC51D	7TAC51D	769.14375	\$F7E	769.14375	\$293	Yes	No	N/A
3	7TAC52D	7TAC52D	769.64375	\$F7E	769.64375	\$293	Yes	No	N/A
4	7TAC53D	7TAC53D	770.14375	\$F7E	770.14375	\$293	Yes	No	N/A
5	7TAC54D	7TAC54D	770.64375	\$F7E	770.64375	\$293	Yes	No	N/A
6	7TAC55D	7TAC55D	769.74375	\$F7E	769.74375	\$293	Yes	No	N/A
7	7TAC56D	7TAC56D	770.24375	\$F7E	770.24375	\$293	Yes	No	N/A
8	7GTAC57D	7GTAC57D	770.99375	\$F7E	770.99375	\$293	Yes	No	N/A
9	7CALL50	7CALL50	769.24375	\$F7E	799.24375	\$293	Yes	No	N/A
10	7TAC51	7TAC51	769.14375	\$F7E	799.14375	\$293	Yes	No	N/A
11	7TAC52	7TAC52	769.64375	\$F7E	799.64375	\$293	Yes	No	N/A
12	7TAC53	7TAC53	770.14375	\$F7E	800.14375	\$293	Yes	No	N/A
13	7TAC54	7TAC54	770.64375	\$F7E	800.64375	\$293	Yes	No	N/A
14	7TAC55	7TAC55	769.74375	\$F7E	799.74375	\$293	Yes	No	N/A
15	7TAC56	7TAC56	770.24375	\$F7E	800.24375	\$293	Yes	No	N/A
16	7GTAC57	7GTAC57	770.99375	\$F7E	800.99375	\$293	Yes	No	N/A

Notes: 7CALL50 and 7CALL50D is the recommended PRIMARY calling channel for the 700 MHz band.
Zone SWIT-BD is equivalent to ITTF-BD.

SWIT-BE

Channel Position	Front Display	Top Display	Receive Frequency	Receive Tone/NAC	Transmit Frequency	Transmit Tone/NAC	P25 Digital	Encrypted	SLN/CKR
1	7MOB59D	7MOB59D	770.89375	\$F7E	770.89375	\$293	Yes	No	N/A
2	7DATA69D	7DATA69D	770.74375	\$F7E	770.74375	\$293	Yes	No	N/A
3	7LAW61D	7LAW61D	770.39375	\$F7E	770.39375	\$293	Yes	No	N/A
4	7LAW62D	7LAW62D	770.49375	\$F7E	770.49375	\$293	Yes	No	N/A
5	7FIRE63D	7FIRE63D	769.89375	\$F7E	769.89375	\$293	Yes	No	N/A
6	7FIRE64D	7FIRE64D	769.99375	\$F7E	769.99375	\$293	Yes	No	N/A
7	7MED65D	7MED65D	769.39375	\$F7E	769.39375	\$293	Yes	No	N/A
8	7MED66D	7MED66D	769.49375	\$F7E	769.49375	\$293	Yes	No	N/A
9	7MOB59	7MOB59	770.89375	\$F7E	800.89375	\$293	Yes	No	N/A
10	7DATA69	7DATA69	770.74375	\$F7E	800.74375	\$293	Yes	No	N/A
11	7LAW61	7LAW61	770.39375	\$F7E	800.39375	\$293	Yes	No	N/A
12	7LAW62	7LAW62	770.49375	\$F7E	800.49375	\$293	Yes	No	N/A
13	7FIRE63	7FIRE63	769.89375	\$F7E	799.89375	\$293	Yes	No	N/A
14	7FIRE64	7FIRE64	769.99375	\$F7E	799.99375	\$293	Yes	No	N/A
15	7MED65	7MED65	769.39375	\$F7E	799.39375	\$293	Yes	No	N/A
16	7MED66	7MED66	769.49375	\$F7E	799.49375	\$293	Yes	No	N/A

Note: Voice communications are permitted on 7DATA69 and 7DATA69D on a secondary basis. (FCC Rule 90.531(b)(1)(i))
Zone SWIT-BE is equivalent to ITTF-BE except for 7DATA69D & 7DATA69 that have been added in Channels 2 & 10 respectively.

IL-SIEC STATEWIDE INTEROPERABILITY TEMPLATE (SWIT) PROGRAMMING GUIDE

SWIT-BF

Channel Position	Front Display	Top Display	Receive Frequency	Receive Tone/NAC	Transmit Frequency	Transmit Tone/NAC	P25 Digital	Encrypted	SLN/CKR
1	7CALL70D	7CALL70D	773.25625	\$F7E	773.25625	\$293	Yes	No	N/A
2	7TAC71D	7TAC71D	773.10625	\$F7E	773.10625	\$293	Yes	No	N/A
3	7TAC72D	7TAC72D	773.60625	\$F7E	773.60625	\$293	Yes	No	N/A
4	7TAC73D	7TAC73D	774.10625	\$F7E	774.10625	\$293	Yes	No	N/A
5	7TAC74D	7TAC74D	774.60625	\$F7E	774.60625	\$293	Yes	No	N/A
6	7TAC75D	7TAC75D	773.75625	\$F7E	773.75625	\$293	Yes	No	N/A
7	7TAC76D	7TAC76D	774.25625	\$F7E	774.25625	\$293	Yes	No	N/A
8	7GTAC77D	7GTAC77D	774.85625	\$F7E	774.85625	\$293	Yes	No	N/A
9	7CALL70	7CALL70	773.25625	\$F7E	803.25625	\$293	Yes	No	N/A
10	7TAC71	7TAC71	773.10625	\$F7E	803.10625	\$293	Yes	No	N/A
11	7TAC72	7TAC72	773.60625	\$F7E	803.60625	\$293	Yes	No	N/A
12	7TAC73	7TAC73	774.10625	\$F7E	804.10625	\$293	Yes	No	N/A
13	7TAC74	7TAC74	774.60625	\$F7E	804.60625	\$293	Yes	No	N/A
14	7TAC75	7TAC75	773.75625	\$F7E	803.75625	\$293	Yes	No	N/A
15	7TAC76	7TAC76	774.25625	\$F7E	804.25625	\$293	Yes	No	N/A
16	7GTAC77	7GTAC77	774.85625	\$F7E	804.85625	\$293	Yes	No	N/A

Notes: 7CALL70 and 7CALL70D are the recommended SECONDARY calling channels for the 700 MHz band.
Zone SWIT-BF is equivalent to ITTF-BF.

SWIT-BG

Channel Position	Front Display	Top Display	Receive Frequency	Receive Tone/NAC	Transmit Frequency	Transmit Tone/NAC	P25 Digital	Encrypted	SLN/CKR
1	7MOB79D	7MOB79D	774.50625	\$F7E	774.50625	\$293	Yes	No	N/A
2	7DATA89D	7DATA89D	774.75625	\$F7E	774.75625	\$293	Yes	No	N/A
3	7LAW81D	7LAW81D	774.00625	\$F7E	774.00625	\$293	Yes	No	N/A
4	7LAW82D	7LAW82D	774.35625	\$F7E	774.35625	\$293	Yes	No	N/A
5	7FIRE83D	7FIRE83D	773.50625	\$F7E	773.50625	\$293	Yes	No	N/A
6	7FIRE84D	7FIRE84D	773.85625	\$F7E	773.85625	\$293	Yes	No	N/A
7	7MED86D	7MED86D	773.00625	\$F7E	773.00625	\$293	Yes	No	N/A
8	7MED87D	7MED87D	773.35625	\$F7E	773.35625	\$293	Yes	No	N/A
9	7MOB79	7MOB79	774.50625	\$F7E	804.50625	\$293	Yes	No	N/A
10	7DATA89	7DATA89	774.75625	\$F7E	804.75625	\$293	Yes	No	N/A
11	7LAW81	7LAW81	774.00625	\$F7E	804.00625	\$293	Yes	No	N/A
12	7LAW82	7LAW82	774.35625	\$F7E	804.35625	\$293	Yes	No	N/A
13	7FIRE83	7FIRE83	773.50625	\$F7E	803.50625	\$293	Yes	No	N/A
14	7FIRE84	7FIRE84	773.85625	\$F7E	803.85625	\$293	Yes	No	N/A
15	7MED86	7MED86	773.00625	\$F7E	803.00625	\$293	Yes	No	N/A
16	7MED87	7MED87	773.35625	\$F7E	803.35625	\$293	Yes	No	N/A

Note: Voice communications are permitted on 7DATA89 and 7DATA89D on a secondary basis. (FCC Rule 90.531(b)(1)(i))
Zone SWIT-BG is equivalent to ITTF-BG except for 7DATA89D & 7DATA89 that have been added in Channels 2 & 10 respectively.

IL-SIEC STATEWIDE INTEROPERABILITY TEMPLATE (SWIT)

PROGRAMMING GUIDE

SWIT-BH

Channel Position	Front Display	Top Display	Receive Frequency	Receive Tone/NAC	Transmit Frequency	Transmit Tone/NAC	P25 Digital	Encrypted	SLN/CKR
1	7FTAC1D	7FTAC1D	769.00625	156.7	769.00625	156.7	No	No	N/A
2	7FTAC2D	7FTAC2D	774.93125	156.7	774.93125	156.7	No	No	N/A
3	7FTAC3D	7FTAC3D	769.04375	156.7	769.04375	156.7	No	No	N/A
4	7GTAC4D	7GTAC4D	769.03125	156.7	769.03125	156.7	No	No	N/A
5	7GTAC5D	7GTAC5D	774.95625	156.7	774.95625	156.7	No	No	N/A
6	7LTAC6D	7LTAC6D	769.01875	156.7	769.01875	156.7	No	No	N/A
7	7LTAC7D	7LTAC7D	774.94375	156.7	774.94375	156.7	No	No	N/A
8	7LTAC8D	7LTAC8D	774.98125	156.7	774.98125	156.7	No	No	N/A
9	7FTAC1	7FTAC1	769.00625	156.7	799.00625	156.7	No	No	N/A
10	7FTAC2	7FTAC2	774.93125	156.7	804.93125	156.7	No	No	N/A
11	7FTAC3	7FTAC3	769.04375	156.7	799.04375	156.7	No	No	N/A
12	7GTAC4	7GTAC4	769.03125	156.7	799.03125	156.7	No	No	N/A
13	7GTAC5	7GTAC5	774.95625	156.7	804.95625	156.7	No	No	N/A
14	7LTAC6	7LTAC6	769.01875	156.7	799.01875	156.7	No	No	N/A
15	7LTAC7	7LTAC7	774.94375	156.7	804.94375	156.7	No	No	N/A
16	7LTAC8	7LTAC8	774.98125	156.7	804.98125	156.7	No	No	N/A

Note: Zone BH channels are conventional analog and limited to two (2) watts ERP.

These channels are not nationwide interoperability channels and require FCC authorization and coordination with Regional Planning Committee Regions 13 & 54. The State of Illinois holds FCC Authorization WQZX653 that includes the frequencies listed herein and is granting the use of these frequencies to public safety and governmental users in compliance with this SWIT.

Zone SWIT-BH is equivalent to ITTF-BH.

SWIT-BI

Channel Position	Front Display	Top Display	Receive Frequency	Receive Tone/NAC	Transmit Frequency	Transmit Tone/NAC	P25 Digital	Encrypted	SLN/CKR
1	7MTAC9D	7MTAC9D	774.96875	156.7	774.96875	156.7	No	No	N/A
2	A7-US-01D	A7-US-01D	769.05625	156.7	769.05625	156.7	No	No	N/A
3	A7-US-02D	A7-US-02D	769.06875	156.7	769.06875	156.7	No	No	N/A
4	A7-US-03D	A7-US-03D	774.99375	156.7	774.99375	156.7	No	No	N/A
5	7MTAC9	7MTAC9	774.96875	156.7	804.96875	156.7	No	No	N/A
6	A7-US-01	A7-US-01	769.05625	156.7	799.05625	156.7	No	No	N/A
7	A7-US-02	A7-US-02	769.06875	156.7	799.06875	156.7	No	No	N/A
8	A7-US-03	A7-US-03	774.99375	156.7	804.99375	156.7	No	No	N/A
9	7-US-01D	7-US-01D	769.05625	\$F7E	769.05625	\$293	Yes	No	N/A
10	7-US-02D	7-US-02D	769.06875	\$F7E	769.06875	\$293	Yes	No	N/A
11	7-US-03D	7-US-03D	774.99375	\$F7E	774.99375	\$293	Yes	No	N/A
12	7-US-01	7-US-01	769.05625	\$F7E	799.05625	\$293	Yes	No	N/A
13	7-US-02	7-US-02	769.06875	\$F7E	799.06875	\$293	Yes	No	N/A
14	7-US-03	7-US-03	774.99375	\$F7E	804.99375	\$293	Yes	No	N/A
15	RESERVED								
16	RESERVED								

Note: The 7-US- frequencies are 700 MHz Low Power Itinerant Channels licensed for itinerant mobile use (convoy operations).

These channels are not nationwide interoperability channels. The State of Illinois (SIEC) is responsible for the administration of these Transmit power for 7-US- channels, in either analog or digital mode, is limited to 2 watts ERP.

It is recommended that radios are programmed for "mixed-mode" (analog & digital) receive for the 7-US- itinerant channels.

Zone SWIT-BI Channels 1-8 are analog and are equivalent to ITTF-BI Channels 1-8.

Zone SWIT-BI Channels 9-14 are digital equivalents to their matching analog Channels.

IL-SIEC STATEWIDE INTEROPERABILITY TEMPLATE (SWIT)

PROGRAMMING GUIDE

SWIT-BJ

Channel Position	Front Display	Top Display	Receive Frequency	Receive Tone/NAC	Transmit Frequency	Transmit Tone/NAC	P25 Digital	Encrypted	SLN/CKR
1	7AG58D	7AG58D	769.13125	\$F7E	769.13125	\$293	Yes	No	N/A
2	7AG60D	7AG60D	769.63125	\$F7E	769.63125	\$293	Yes	No	N/A
3	7AG67D	7AG67D	770.13125	\$F7E	770.13125	\$293	Yes	No	N/A
4	7AG68D	7AG68D	770.63125	\$F7E	770.63125	\$293	Yes	No	N/A
5	7AG78D	7AG78D	773.11875	\$F7E	773.11875	\$293	Yes	No	N/A
6	7AG80D	7AG80D	773.61875	\$F7E	773.61875	\$293	Yes	No	N/A
7	7AG85D	7AG85D	774.11875	\$F7E	774.11875	\$293	Yes	No	N/A
8	7AG88D	7AG88D	774.61875	\$F7E	774.61875	\$293	Yes	No	N/A
9	7AG58	7AG58	769.13125	\$F7E	799.13125	\$293	Yes	No	N/A
10	7AG60	7AG60	769.63125	\$F7E	799.63125	\$293	Yes	No	N/A
11	7AG67	7AG67	770.13125	\$F7E	800.13125	\$293	Yes	No	N/A
12	7AG68	7AG68	770.63125	\$F7E	800.63125	\$293	Yes	No	N/A
13	7AG78	7AG78	773.11875	\$F7E	803.11875	\$293	Yes	No	N/A
14	7AG80	7AG80	773.61875	\$F7E	803.61875	\$293	Yes	No	N/A
15	7AG85	7AG85	774.11875	\$F7E	804.11875	\$293	Yes	No	N/A
16	7AG88	7AG88	774.61875	\$F7E	804.61875	\$293	Yes	No	N/A

Notes: These channels are reserved for air-ground communications to be used by low-altitude aircraft and ground based units. Airborne use of these channels is limited to aircraft flying at or below 1500 feet (457 meters) above ground level. Aircraft are limited to 2 watts effective radiated power on the air-ground channels while airborne. Aircraft may transmit on either the mobile or base transmit side of the channel pair. 7AG88D is recommended for landing zone use. Use of 7AG88 (repeated) is not recommended during landing zone operations. These channels are not nationwide interoperability channels.

SWIT-SECURE-BY

Channel Position	Front Display	Top Display	Receive Frequency	Receive Tone/NAC	Transmit Frequency	Transmit Tone/NAC	P25 Digital	Encrypted	SLN/CKR
1	7MOB59DE	7MOB59DE	770.89375	\$F7E	770.89375	\$293	Yes	Yes	1401
2	7MOB79DE	7MOB79DE	774.50625	\$F7E	774.50625	\$293	Yes	Yes	1401
3	7LAW81DE	7LAW81DE	774.00625	\$F7E	774.00625	\$293	Yes	Yes	1402
4	7LAW82DE	7LAW82DE	774.35625	\$F7E	774.35625	\$293	Yes	Yes	1402
5	7FIRE83DE	7FIRE83DE	773.50625	\$F7E	773.50625	\$293	Yes	Yes	1403
6	7FIRE84DE	7FIRE84DE	773.85625	\$F7E	773.85625	\$293	Yes	Yes	1403
7	7MED86DE	7MED86DE	773.00625	\$F7E	773.00625	\$293	Yes	Yes	1403
8	7MED87DE	7MED87DE	773.35625	\$F7E	773.35625	\$293	Yes	Yes	1403
9	7MOB59E	7MOB59E	770.89375	\$F7E	800.89375	\$293	Yes	Yes	1401
10	7MOB79E	7MOB79E	774.50625	\$F7E	804.50625	\$293	Yes	Yes	1401
11	7LAW81E	7LAW81E	774.00625	\$F7E	804.00625	\$293	Yes	Yes	1402
12	7LAW82E	7LAW82E	774.35625	\$F7E	804.35625	\$293	Yes	Yes	1402
13	7FIRE83E	7FIRE83E	773.50625	\$F7E	803.50625	\$293	Yes	Yes	1403
14	7FIRE84E	7FIRE84E	773.85625	\$F7E	803.85625	\$293	Yes	Yes	1403
15	7MED86E	7MED86E	773.00625	\$F7E	803.00625	\$293	Yes	Yes	1403
16	7MED87E	7MED87E	773.35625	\$F7E	803.35625	\$293	Yes	Yes	1403

Note: Use of these SECURE frequencies must be authorized by the SWIC or IEMA Operations Center. (217-782-7860)

IL STATEWIDE INTEROPERABILITY TEMPLATE (SWIT) STARCOM21 TALKGROUPS/CONVERSION TABLE

Approved: 16-Sep-2021

Updated: 26-Jan-2022

CALLING

Channel Position	Front Display	Top Display	Legacy Name	Legacy Zone	Talkgroup Hex ID	Talkgroup Dec ID	Talkgroup Statewide	SLN/CKR	TG Set AES Always
1	IL-CALL	CALL	IESMA	BA	7678	30328	Yes	N/A	No
2	ILEAS	ILEAS	ILEAS	BA	7679	30329	Yes	N/A	No
3	MABAS	MABAS	MABAS	BA	767A	30330	Yes	N/A	No
4	IDPH	IDPH	IDPH	BA	767B	30331	Yes	N/A	No
5	IPWMAN	IPWMAN	IPWMAN	BA	7683	30339	Yes	N/A	No
6	EMA	EMA	NORTH A	BA	765C	30300	Yes	N/A	No
7	IL-RGN 2	RGN 2	RGN 2B	BB	7660	30304	Yes	N/A	No
8	IL-RGN 3	RGN 3	RGN 3B	BB	7662	30306	Yes	N/A	No
9	IL-RGN 4	RGN 4	RGN 4B	BB	7670	30320	Yes	N/A	No
10	IL-RGN 6	RGN 6	RGN 6B	BB	7672	30322	Yes	N/A	No
11	IL-RGN 7	RGN 7	RGN 7B	BB	7674	30324	Yes	N/A	No
12	IL-RGN 8	RGN 8	RGN 8B	BB	7676	30326	Yes	N/A	No
13	IL-RGN 9	RGN 9	RGN 9B	BB	7680	30336	Yes	N/A	No
14	IL-RGN11	RGN 11	RGN 11B	BB	7682	30338	Yes	N/A	No
15	IL-102A	102A	SOUTH A	BA	765E	30302	Yes	N/A	No
16	IL-102B	102B	SOUTH B	BA	7688	30344	Yes	N/A	No

Note: All STARCOM21 radios used by field personnel must be programmed with the Calling, Incident A, Incident B and Reserve zones. All new radios purchased must be equipped with AES-256 multi-key encryption. All AES-256 multi-key equipped field radios must be programmed with the SECURE A and SECURE B and SWIT-BY zones.

INCIDENT A

Channel Position	Front Display	Top Display	Legacy Name	Legacy Zone	Talkgroup Hex ID	Talkgroup Dec ID	Talkgroup Statewide	SLN/CKR	TG Set AES Always
1	IL-INC A1	INC A1	INCIDENT1	BA	767C	30332	Yes	N/A	No
2	IL-INC A2	INC A2	INCIDENT2	BA	767D	30333	Yes	N/A	No
3	IL-INC A3	INC A3	INCIDENT3	BA	767E	30334	Yes	N/A	No
4	IL-INC A4	INC A4	INCIDENT4	BA	7684	30340	Yes	N/A	No
5	IL-INC A5	INC A5	INCIDENT5	BA	7685	30341	Yes	N/A	No
6	IL-INC A6	INC A6	RGN 2A	BB	765F	30303	Yes	N/A	No
7	IL-INC A7	INC A7	RGN 3A	BB	7661	30305	Yes	N/A	No
8	IL-INC A8	INC A8	RGN 4A	BB	7663	30307	Yes	N/A	No
9	IL-INC A9	INC A9	RGN 6A	BB	7671	30321	Yes	N/A	No
10	IL-INC A10	INC A10	RGN 7A	BB	7673	30323	Yes	N/A	No
11	IL-INC A11	INC A11	RGN 8A	BB	7675	30325	Yes	N/A	No
12	IL-INC A12	INC A12	RGN 9A	BB	767F	30335	Yes	N/A	No
13	IL-INC A13	INC A13	RGN 11A	BB	7681	30337	Yes	N/A	No
14	IL-INC A14	INC A14	NORTH B	BA	7686	30342	Yes	N/A	No
15	IL-INC A15	INC A15	CENTER A	BA	765D	30301	Yes	N/A	No
16	IL-INC A16	INC A16	CENTER B	BA	7687	30343	Yes	N/A	No

Note: Use of INCIDENT A talkgroups must be approved through the IEMA Operations Center. (217-782-7860) ema.dispatcher@illinois.gov

IL STATEWIDE INTEROPERABILITY TEMPLATE (SWIT) STARCOM21 TALKGROUPS/CONVERSION TABLE

Approved: 16-Sep-2021

Updated: 26-Jan-2022

INCIDENT B

Channel Position	Front Display	Top Display	Legacy Name	Legacy Zone	Talkgroup Hex ID	Talkgroup Dec ID	Talkgroup Statewide	SLN/CKR	TG Set AES Always
1	IL-INC B1	INC B1	(NEW)	N/A	90F4	37108	Yes	N/A	No
2	IL-INC B2	INC B2	(NEW)	N/A	90F5	37109	Yes	N/A	No
3	IL-INC B3	INC B3	(NEW)	N/A	90F6	37110	Yes	N/A	No
4	IL-INC B4	INC B4	(NEW)	N/A	90F7	37111	Yes	N/A	No
5	IL-INC B5	INC B5	(NEW)	N/A	90F8	37112	Yes	N/A	No
6	IL-INC B6	INC B6	(NEW)	N/A	90F9	37113	Yes	N/A	No
7	IL-INC B7	INC B7	(NEW)	N/A	90FA	37114	Yes	N/A	No
8	IL-INC B8	INC B8	(NEW)	N/A	90FB	37115	Yes	N/A	No
9	IL-INC B9	INC B9	(NEW)	N/A	90FC	37116	Yes	N/A	No
10	IL-INC B10	INC B10	(NEW)	N/A	90FD	37117	Yes	N/A	No
11	IL-INC B11	INC B11	(NEW)	N/A	90FE	37118	Yes	N/A	No
12	IL-INC B12	INC B12	(NEW)	N/A	90FF	37119	Yes	N/A	No
13	IL-INC B13	INC B13	(NEW)	N/A	9100	37120	Yes	N/A	No
14	IL-INC B14	INC B14	(NEW)	N/A	9101	37121	Yes	N/A	No
15	IL-INC B15	INC B15	(NEW)	N/A	9102	37122	Yes	N/A	No
16	IL-INC B16	INC B16	(NEW)	N/A	9103	37123	Yes	N/A	No

Note: Use of INCIDENT B talkgroups must be approved through the IEMA Operations Center. (217-782-7860) ema.dispatcher@illinois.gov

RESERVE A

Channel Position	Front Display	Top Display	Legacy Name	Legacy Zone	Talkgroup Hex ID	Talkgroup Dec ID	Talkgroup Statewide	SLN/CKR	TG Set AES Always
1	IL-RSV 1	RSV 1	(NEW)	N/A	9104	37124	Yes	N/A	No
2	IL-RSV 2	RSV 2	(NEW)	N/A	9105	37125	Yes	N/A	No
3	IL-RSV 3	RSV 3	(NEW)	N/A	9106	37126	Yes	N/A	No
4	IL-RSV 4	RSV 4	(NEW)	N/A	9107	37127	Yes	N/A	No
5	IL-RSV 5	RSV 5	(NEW)	N/A	9108	37128	Yes	N/A	No
6	IL-RSV 6	RSV 6	(NEW)	N/A	9109	37129	Yes	N/A	No
7	IL-RSV 7	RSV 7	(NEW)	N/A	910A	37130	Yes	N/A	No
8	IL-RSV 8	RSV 8	(NEW)	N/A	910B	37131	Yes	N/A	No
9	IL-RSV 9	RSV 9	(NEW)	N/A	910C	37132	Yes	N/A	No
10	IL-RSV 10	RSV 10	(NEW)	N/A	910D	37133	Yes	N/A	No
11	IL-RSV 11	RSV 11	(NEW)	N/A	910E	37134	Yes	N/A	No
12	IL-RSV 12	RSV 12	(NEW)	N/A	910F	37135	Yes	N/A	No
13	IL-RSV 13	RSV 13	(NEW)	N/A	9110	37136	Yes	N/A	No
14	IL-RSV 14	RSV 14	(NEW)	N/A	9111	37137	Yes	N/A	No
15	IL-RSV 15	RSV 15	(NEW)	N/A	9112	37138	Yes	N/A	No
16	IL-RSV 16	RSV 16	(NEW)	N/A	9113	37139	Yes	N/A	No

Notes: Use of RESERVE A talkgroups must be approved through the IEMA Operations Center. (217-782-7860) ema.dispatcher@illinois.gov
RESERVE A talkgroups should be pre-programmed in STARCOM21 capable radios. These talkgroups will not be active unless needed, as determined by the SWIC.

IL STATEWIDE INTEROPERABILITY TEMPLATE (SWIT) STARCOM21 TALKGROUPS/CONVERSION TABLE

Approved: 16-Sep-2021

Updated: 26-Jan-2022

SECURE A

Channel Position	Front Display	Top Display	Legacy Name	Legacy Zone	Talkgroup Hex ID	Talkgroup Dec ID	Talkgroup Statewide	SLN/CKR	TG Set AES Always
1	IL-SEC A1	SEC A1	SECURE1	BZ	1749	5961	Yes	1401	Yes
2	IL-SEC A2	SEC A2	SECURE2	BZ	174A	5962	Yes	1401	Yes
3	IL-SEC A3	SEC A3	SECURE3	BZ	174B	5963	Yes	1401	Yes
4	IL-SEC A4	SEC A4	SECURE4	BZ	174C	5964	Yes	1401	Yes
5	IL-SEC A5	SEC A5	SECURE5	BZ	174D	5965	Yes	1401	Yes
6	IL-SEC A6	SEC A6	SECURE6	BZ	174E	5966	Yes	1401	Yes
7	IL-SECLAW7	SECLAW7	SECLAW1	BZ	1751	5969	Yes	1402	Yes
8	IL-SECLAW8	SECLAW8	SECLAW2	BZ	1752	5970	Yes	1402	Yes
9	IL-SECLAW9	SECLAW9	SECURE7	BZ	174F	5967	Yes	1402	Yes
10	IL-SECLAW10	SECLAW10	SECURE8	BZ	1750	5968	Yes	1402	Yes
11	IL-SECFIRE11	SECFIR11	SECFIRE1	BZ	1753	5971	Yes	1403	Yes
12	IL-SECFIRE12	SECFIR12	SECFIRE2	BZ	1754	5972	Yes	1403	Yes
13	IL-SECCEMA13	SECCEMA13	SECCEMA1	BZ	1755	5973	Yes	1404	Yes
14	IL-SECCEMA14	SECCEMA14	SECCEMA2	BZ	1756	5974	Yes	1404	Yes
15	IL-SECDOT15	SECDOT15	SECDOT1	BZ	1757	5975	Yes	1405	Yes
16	IL-SECDOT16	SECDOT16	SECDOT2	BZ	1758	5976	Yes	1405	Yes

Notes: Use of SECURE A talkgroups must be approved through the IEMA Operations Center. (217-782-7860) ema.dispatcher@illinois.gov
 Use of these talkgroups will require radios equipped with AES-256 multi-key hardware encryption.
 Programming of encryption keys must be in compliance with SIEC policies and procedures. Law enforcement, fire keys and 9-1-1 keys have special restrictions. Law Talkgroups/Keys are restricted to authorized Law, COM-L and cache radios. Fire Talkgroups/Keys are restricted to authorized Fire, COM-L and cache radios.
 IL-SEC A1 and IL-SEC A2 may be programmed into dispatch consoles. No other SECURE A or SECURE B talkgroups may be programmed into dispatch radios or be recorded.

SECURE B

Channel Position	Front Display	Top Display	Legacy Name	Legacy Zone	Talkgroup Hex ID	Talkgroup Dec ID	Talkgroup Statewide	SLN/CKR	TG Set AES Always
1	IL-SEC B1	SEC B1	(NEW)	N/A	9114	37140	Yes	1401	Yes
2	IL-SEC B2	SEC B2	(NEW)	N/A	9115	37141	Yes	1401	Yes
3	IL-SEC B3	SEC B3	(NEW)	N/A	9116	37142	Yes	1401	Yes
4	IL-SEC B4	SEC B4	(NEW)	N/A	9117	37143	Yes	1401	Yes
5	IL-SEC B5	SEC B5	(NEW)	N/A	9118	37144	Yes	1401	Yes
6	IL-SEC B6	SEC B6	(NEW)	N/A	9119	37145	Yes	1401	Yes
7	IL-SEC B7	SEC B7	(NEW)	N/A	911A	37146	Yes	1401	Yes
8	IL-SEC B8	SEC B8	(NEW)	N/A	911B	37147	Yes	1401	Yes
9	IL-SEC B9	SEC B9	(NEW)	N/A	911C	37148	Yes	1401	Yes
10	IL-SEC B10	SEC B10	(NEW)	N/A	911D	37149	Yes	1401	Yes
11	IL-SEC B11	SEC B11	(NEW)	N/A	911E	37150	Yes	1401	Yes
12	IL-SEC B12	SEC B12	(NEW)	N/A	911F	37151	Yes	1401	Yes
13	IL-SEC B13	SEC B13	(NEW)	N/A	9120	37152	Yes	1401	Yes
14	IL-SEC B14	SEC B14	(NEW)	N/A	9121	37153	Yes	1401	Yes
15	IL-SEC B15	SEC B15	(NEW)	N/A	9122	37154	Yes	1401	Yes
16	IL-SEC B16	SEC B16	(NEW)	N/A	9123	37155	Yes	1401	Yes

Notes: All notes for zone SECURE A also apply to zone SECURE B.

IL STATEWIDE INTEROPERABILITY TEMPLATE (SWIT) STARCOM21 TALKGROUPS/CONVERSION TABLE

Approved: 16-Sep-2021

Updated: 26-Jan-2022

NWS

Channel Position	Front Display	Top Display	Legacy Name	Legacy Zone	Talkgroup Hex ID	Talkgroup Dec ID	Talkgroup Statewide	SLN/CKR	TG Set AES Always
1	NWS-CHI	NWSCHI	(NEW)	N/A	9124	37156	Yes	N/A	No
2	NWS-QUAD	NWSQUAD	(NEW)	N/A	9125	37157	Yes	N/A	No
3	NWS-LINC	NWSLINC	(NEW)	N/A	9126	37158	Yes	N/A	No
4	NWS-STL	NWSSTL	(NEW)	N/A	9127	37159	Yes	N/A	No
5	NWS-PDK	NWSPDK	(NEW)	N/A	9128	37160	Yes	N/A	No
6	NWS-MKE	NWSMKE	(NEW)	N/A	9129	37161	Yes	N/A	No
7	NWS-SW	NWS-SW	(NEW)	N/A	912A	37162	Yes	N/A	No
8	RESERVED								
9	RESERVED								
10	RESERVED								
11	RESERVED								
12	RESERVED								
13	RESERVED								
14	RESERVED								
15	RESERVED								
16	RESERVED								

Note: Governance for National Weather Service talkgroups is pending.

NWS talkgroups may also be programmed into local zones to facilitate ease of operation by the end-user.

MABAS

Channel Position	Front Display	Top Display	Legacy Name	Legacy Zone	Talkgroup Hex ID	Talkgroup Dec ID	Talkgroup Statewide	SLN/CKR	TG Set AES Always
1	MABAS	MABAS	MABAS	BA	767A	30330	Yes		No
2	MABAS SEC	MAB SEC	MABASSEC	MABAS	12DF	4831	Yes	1501	Yes
3	MABAS OPS1	OPS1	OPS	MABAS	12DE	4830	Yes		No
4	MABAS OPS2	OPS2	(NEW)	N/A	12E7	4839	Yes		
5	MABAS OPS3E	OPS3E	OPS SEC	MABAS	12E4	4836	Yes	1501	Yes
6	MABAS OPS4E	OPS4E	(NEW)	N/A	12E8	4840	Yes	1501	Yes
7	MABAS OPS5E	OPS5E	(NEW)	N/A	12E9	4841	Yes	1501	Yes
8	IL-HZMT	HZMT	HAZMAT	MABAS	12DB	4827	Yes		No
9	IL-HZMT SEC	HZMT SEC	HZMT SEC	MABAS	12E1	4833	Yes	1501	Yes
10	IL-TRT	TRT	TRT	MABAS	12DC	4828	Yes		No
11	IL-TRT SEC	TRT SEC	TRT SEC	MABAS	12E2	4834	Yes	1501	Yes
12	IL-TF1	ILTF1	USAR	MABAS	12DD	4829	Yes		No
13	IL-TF1 SEC	TF1 SEC	USAR SEC	MABAS	12E3	4835	Yes	1502	Yes
14	ADMIN	ADMIN	ADMIN	MABAS	12DA	4826	Yes		No
15	ADMIN SEC1	AD SEC1	ADMINSEC1	MABAS	12E0	4832	Yes	1503	Yes
16	ADMIN SEC2	AD SEC2	ADMINSEC2	MABAS	12E6	4838	Yes	1504	Yes

Notes: Channels 1 - 11 approved for general programming in all Fire Department, Fire Dispatch, COM-L and authorized cache radios.

Channels 12 through 16 as determined by MABAS only. Not for general programming.

Use of the encrypted talkgroups will require radios equipped with AES-256 multi-key hardware encryption.

IL STATEWIDE INTEROPERABILITY TEMPLATE (SWIT) STARCOM21 TALKGROUPS/CONVERSION TABLE

Approved: 16-Sep-2021

Updated: 26-Jan-2022

ILEAS A

Channel Position	Front Display	Top Display	Legacy Name	Legacy Zone	Talkgroup Hex ID	Talkgroup Dec ID	Talkgroup Statewide	SLN/CKR	TG Set AES Always
1	ILEAS A1	ILEAS A1	(NEW)	N/A	912B	37163	Yes	1521	Yes
2	ILEAS A2	ILEAS A2	(NEW)	N/A	912C	37164	Yes	1521	Yes
3	ILEAS A3	ILEAS A3	(NEW)	N/A	912D	37165	Yes	1521	Yes
4	ILEAS A4	ILEAS A4	(NEW)	N/A	912E	37166	Yes	1521	Yes
5	ILEAS A5	ILEAS A5	(NEW)	N/A	912F	37167	Yes	1521	Yes
6	ILEAS A6	ILEAS A6	(NEW)	N/A	9130	37168	Yes	1521	Yes
7	ILEAS A7	ILEAS A7	(NEW)	N/A	9131	37169	Yes	1521	Yes
8	ILEAS A8	ILEAS A8	(NEW)	N/A	9132	37170	Yes	1521	Yes
9	ILEAS A9	ILEAS A9	(NEW)	N/A	9133	37171	Yes	1521	Yes
10	ILEAS A10	ILEAS A10	(NEW)	N/A	9134	37172	Yes	1521	Yes
11	ILEAS A11	ILEAS A11	(NEW)	N/A	9135	37173	Yes	1521	Yes
12	ILEAS A12	ILEAS A12	(NEW)	N/A	9136	37174	Yes	1521	Yes
13	ILEAS A13	ILEAS A13	(NEW)	N/A	9137	37175	Yes	1521	Yes
14	ILEAS A14	ILEAS A14	(NEW)	N/A	9138	37176	Yes	1521	Yes
15	ILEAS A15	ILEAS A15	(NEW)	N/A	9139	37177	Yes	1521	Yes
16	ILEAS A16	ILEAS A16	(NEW)	N/A	913A	37178	Yes	1521	Yes

Notes: Not for general programming/use.

Programming and use of ILEAS A talkgroups as determined by ILEAS.

Use of the encrypted talkgroups will require radios equipped with AES-256 multi-key hardware encryption.

ILEAS B

Channel Position	Front Display	Top Display	Legacy Name	Legacy Zone	Talkgroup Hex ID	Talkgroup Dec ID	Talkgroup Statewide	SLN/CKR	TG Set AES Always
1	ILEAS B1	ILEAS B1	(NEW)	N/A	913B	37179	Yes	1521	Yes
2	ILEAS B2	ILEAS B2	(NEW)	N/A	913C	37180	Yes	1521	Yes
3	ILEAS B3	ILEAS B3	(NEW)	N/A	913D	37181	Yes	1521	Yes
4	ILEAS B4	ILEAS B4	(NEW)	N/A	913E	37182	Yes	1521	Yes
5	ILEAS B5	ILEAS B5	(NEW)	N/A	913F	37183	Yes	1521	Yes
6	ILEAS B6	ILEAS B6	(NEW)	N/A	9140	37184	Yes	1521	Yes
7	ILEAS B7	ILEAS B7	(NEW)	N/A	9141	37185	Yes	1521	Yes
8	ILEAS B8	ILEAS B8	(NEW)	N/A	9142	37186	Yes	1521	Yes
9	ILEAS B9	ILEAS B9	(NEW)	N/A	9143	37187	Yes	1521	Yes
10	ILEAS B10	ILEAS B10	(NEW)	N/A	9144	37188	Yes	1521	Yes
11	ILEAS B11	ILEAS B11	(NEW)	N/A	9145	37189	Yes	1521	Yes
12	ILEAS B12	ILEAS B12	(NEW)	N/A	9146	37190	Yes	1521	Yes
13	ILEAS B13	ILEAS B13	(NEW)	N/A	9147	37191	Yes	1521	Yes
14	ILEAS B14	ILEAS B14	(NEW)	N/A	9148	37192	Yes	1521	Yes
15	ILEAS B15	ILEAS B15	(NEW)	N/A	9149	37193	Yes	1521	Yes
16	ILEAS B16	ILEAS B16	(NEW)	N/A	914A	37194	Yes	1521	Yes

Notes: Not for general programming/use.

Programming and use of ILEAS B talkgroups as determined by ILEAS.

Use of the encrypted talkgroups will require radios equipped with AES-256 multi-key hardware encryption.

IL STATEWIDE INTEROPERABILITY TEMPLATE (SWIT) STARCOM21 TALKGROUPS/CONVERSION TABLE

Approved: 16-Sep-2021

Updated: 26-Jan-2022

9-1-1

Channel Position	Front Display	Top Display	Legacy Name	Legacy Zone	Talkgroup Hex ID	Talkgroup Dec ID	Talkgroup Statewide	SLN/CKR	TG Set AES Always
1	IL-TERT N	TERT N	(NEW)	N/A	90F1	37105	Yes	1409	Yes
2	IL-TERT C	TERT C	(NEW)	N/A	90F2	37106	Yes	1409	Yes
3	IL-TERT S	TERT S	(NEW)	N/A	90F3	37107	Yes	1409	Yes
4	911 CAC	911CAC	(NEW)	N/A	90ED	37101	Yes	1407	Yes
5	911 SUP	911SUP	(NEW)	N/A	90EE	37102	Yes	1407	Yes
6	911 TECH	911TECH	(NEW)	N/A	90EF	37103	Yes	1407	Yes
7	R-TECH	RTECH	(NEW)	N/A	90F0	37104	Yes	1408	Yes
8	RESERVED								
9	RESERVED								
10	RESERVED								
11	RESERVED								
12	RESERVED								
13	RESERVED								
14	RESERVED								
15	RESERVED								
16	RESERVED								

Notes: Not for general programming/use.

Zone is restricted to 9-1-1 PSAP personnel and radio technicians as determined by SIEC governance.

9-1-1 talkgroups may also be programmed into local zones to facilitate ease of operation by the end-user.

Use of 9-1-1 talkgroups will require radios equipped with AES-256 multi-key hardware encryption.

Illinois Statewide Interoperability Template (SWIT)

Familiarization

February 2023



WHAT IS THE SWIT?

The Illinois Statewide Interoperability Template (SWIT) is a standardized radio template to facilitate effective interagency communications across Illinois.



SWIT PURPOSE

- Refine and update the legacy Illinois Terrorism Task Force (ITTF) Template to include new and legacy SC21 Talkgroups (TGs)
- Update conventional channels, and include all available Interop Channels in High-Band VHF (National and Federal), UHF (National and Federal), 700MHz, and 800MHz bands



ILSIEC

ILLINOIS STATEWIDE INTEROPERABILITY
EXECUTIVE COMMITTEE

JUST ROLL WITH SWIT

By December 31, 2025, SWIT implementation will be complete.

1. Review the template and recommended visor cards.
2. Get your radios programmed.
3. Load the common patch key CKR1,



WHEN IN DOUBT

If you have questions or comments about the SWIT, TG use, or interoperability in general... please contact:

- The Statewide Interoperability Coordinator Matthew Miller or
- The Deputy Coordinator Colin Vasconcelles.

Email: ema.swic@illinois.gov

OPS Center Phone: 217-782-7860

NOTE: Almost all TGs in the SWIT need pre-approval for event use.



SWIT DEVELOPMENT AND HISTORY

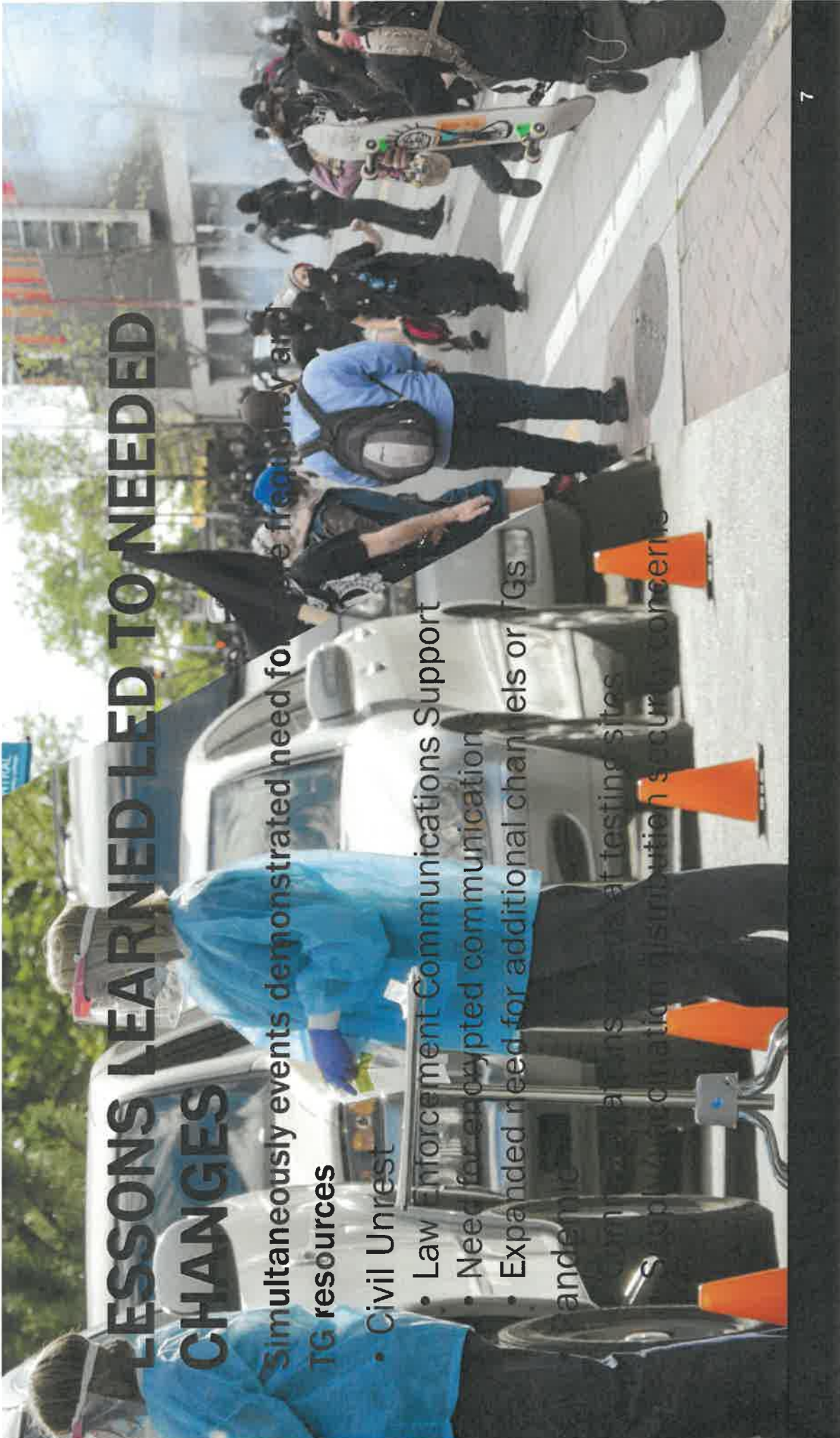
The process from then to now.

LESSONS LEARNED LED TO NEEDED CHANGES

Simultaneously events demonstrated need for more frequently and TG resources

- Civil Unrest
- Law Enforcement Communications Support
- Need for encrypted communications
- Expanded need for additional channels or TGS

andemic
communications needs at testing sites
social vaccination distribution security concerns



IMPROVED INTEROPERABILITY AND EXPANDED RESOURCES

- Interoperability is achieved and improved by having a coordinated template that supports communications use in all available frequency bands. It serves as the lowest common communications denominator between agencies.
- The SWIC, SIEC, and SIEC Technical Committee recognized the need to update the ITTF template plan to incorporate the lessons learned from the prior events and expand access to all users.



SIEC ACTIONS TOWARDS NEW SWIT

- **June 2021** – Setup workshop to concentrate on the refresh of the ITTF
- **July 2021** – Assigned the Technical Subcommittee to address refresh
- **September 2021** – Joint Technical/Governance Committee Workshop
- **September 2021** – Initial Statewide Interoperability Template Approved
- **November 2021** – Statewide Interoperability Template Updated



ITTF TEMPLATE HISTORY

- In the early 2000s, the Illinois State Police (ISP) moved to a new radio system and other state agencies were ready to follow.
- Concurrently, a few local agencies were developing their own radio systems or planning to join STARCOM 21.
- Many agencies across the state were using VHF and UHF frequencies for years.
- With multiple system migrations, the need to develop interoperability plans was part of ongoing discussions amongst agencies.



ITTF TEMPLATE HISTORY

CONT.

- Through the early 2000's, many public safety agencies increased engagement in interoperable communications, and plans were developed for common TGs and channels designed to achieve operability and interoperability.
- The STARCOM 21 system reached the final acceptance phases in 2007.



WHAT AN EARLY ITTF TEMPLATE LOOKED LIKE

Mode	Zone							
	AA	AB	AC	AD	AE	AF	AG	
1	IESMA	RGN 6A	7 TAC 58D	7 TAC 74D	7 CAL 59D	I-CALL D	8CAL-90D	
2	ILEAS	RGN 6B	7 TAC 62D	7 TAC 78D	7 TAC 63D	I-TAC 1 D	8TAC-91D	
3	MABAS	RGN 7A	7 TAC 66D	7 TAC 82D	7 TAC 67D	I-TAC 2 D	8TAC-92D	
4	PUB HLTH	RGN 7B	7 LAW 68D	7 LAW 84D	7 TAC 73D	I-TAC 3 D	8TAC-93D	
5	INCDNT 1	RGN 8A	7 LAW 69D	7 LAW 85D	7 CAL 75D	I-TAC 4 D	8TAC-94D	
6	INCDNT 2	RGN 8B	7 TAC 70D	7 TAC 86D	7 TAC 79D	I-CALL R	8CAL-90R	
7	INCDNT 3	RGN 9A	7 MOB 72D	7 MOB 88D	7 TAC 83D	I-TAC 1 R	8TAC-91R	
8	ZONE 1	RGN 9B	7 TAC 58	7 TAC 74	7 TAC 89D	I-TAC 2 R	8TAC-92R	
9	ZONE 2	RGN 11A	7 TAC 62	7 TAC 78	7 CAL 59	I-TAC 3 R	8TAC-93R	
10	ZONE 3	RGN 11B	7 TAC 66	7 TAC 82	7 TAC 63	I-TAC 4 R	8TAC-94R	
11	RGN 2A		7 LAW 68	7 LAW 84	7 TAC 67			
12	RGN 2B		7 LAW 69	7 LAW 85	7 TAC 73			
13	RGN 3A		7 TAC 70	7 TAC 86	7 CAL 75			
14	RGN 3B		7 MOB 72	7 MOB 88	7 TAC 79			
15	RGN 4A				7 TAC 83			
16	RGN 4B				7 TAC 89			

Original ITTF "A" template of 32 talkgroups created a "common ground / lowest Common denominator" communications use plan for STARCOM and 700/800 interoperability



Shown above is the successor "AA" template

VHF IS STILL IMPORTANT TO SUPPORT INTEROPERABILITY

- To support early interoperability, there were over 3000 VHF radios distributed in Illinois to law, fire and emergency management agencies.
- Many agencies in Illinois still utilize the same VHF frequencies that were part of the original VHF template and therefore they are also included in the new SWIT.



THE TRANSITION TO THE "B" ITTF TEMPLATE

Zone												
BA	BB	BC	BD	BE	BF	BG	BH	BI				
1 IESMA	RGN 2A	8CALL90D	7CALL50D	7MOB59D	7CALL70D	7MOB79D	7FTAC1D	7MTAC9D				
2 ILEAS	RGN 2B	8TAC91D	7TAC51D	7MOB59DA	7TAC71D	7MOB79DA	7FTAC2D	7NTAC10D				
3 MABAS	RGN 3A	8TAC92D	7TAC52D	7LAW61D	7TAC72D	7LAW81D	7FTAC3D	7NTAC11D				
4 PUB HLTH	RGN 3B	8TAC93D	7TAC53D	7LAW62D	7TAC73D	7LAW82D	7GTAC4D	7NTAC12D				
5 IPWMAN	RGN 4A	8TAC94D	7TAC54D	7FIRE63D	7TAC74D	7FIRE83D	7GTAC5D	7MTAC9				
6 INCDNT 1	RGN 4B	8CALL90	7TAC55D	7FIRE64D	7TAC75D	7FIRE84D	7LTAC6D	7NTAC10				
7 INCDNT 2	RGN 6A	8TAC91	7TAC56D	7MED65D	7TAC76D	7MED86D	7LTAC7D	7NTAC11				
8 INCDNT 3	RGN 6B	8TAC92	7GTAC57D	7MED66D	7GTAC77D	7MED87D	7LTAC8D	7NTAC12				
9 INCDNT 4	RGN 7A	8TAC93	7CALL50	7MOB59	7CALL70	7MOB79	7FTAC1					
10 INCDNT 5	RGN 7B	8TAC94	7TAC51	7MOB59A	7TAC71	7MOB79A	7FTAC2					
11 NORTH A	RGN 8A		7TAC52	7LAW61	7TAC72	7LAW81	7FTAC3					
12 NORTH B	RGN 8B		7TAC53	7LAW62	7TAC73	7LAW82	7GTAC4					
13 CENTER A	RGN 9A		7TAC54	7FIRE63	7TAC74	7FIRE83	7GTAC5					
14 CENTER B	RGN 9B		7TAC55	7FIRE64	7TAC75	7FIRE84	7LTAC6					
15 SOUTH A	RGN 11A		7TAC56	7MED65	7TAC76	7MED86	7LTAC7					
16 SOUTH B	RGN 11B		7GTAC57	7MED66	7GTAC77	7MED87	7LTAC8					

The "B" Template was developed in 2010.



ENCRYPTION

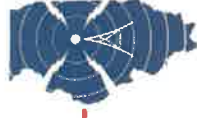
In 2016-2017, encryption was adopted and zones BY and BZ were added.

If you plan on encrypting your own TGs or frequencies, the SLN/CKR and KID selection must be coordinated by Motorola in conjunction with the SIEC Encryption Working Group (EWG).

BY- 700
Interop
Encrypted

7MOB59DE	SECURE 1
7MOB79DE	SECURE 2
7LAW81DE	SECURE 3
7LAW82DE	SECURE 4
7FIRE83DE	SECURE 5
7FIRE84DE	SECURE 6
7MED86DE	SECURE 7
7MED87DE	SECURE 8
7MOB59E	SECLAW 1
7MOB79E	SECLAW 2
7LAW81E	SECFIR 1
7LAW82E	SECFIR 2
7FIRE83E	SECEMA 1
7FIRE84E	SECEMA 2
7MED86E	SECDOT 1
7MED87E	SECDOT 2

BZ- Secure
TGs on
STARCOM



ILSIEC

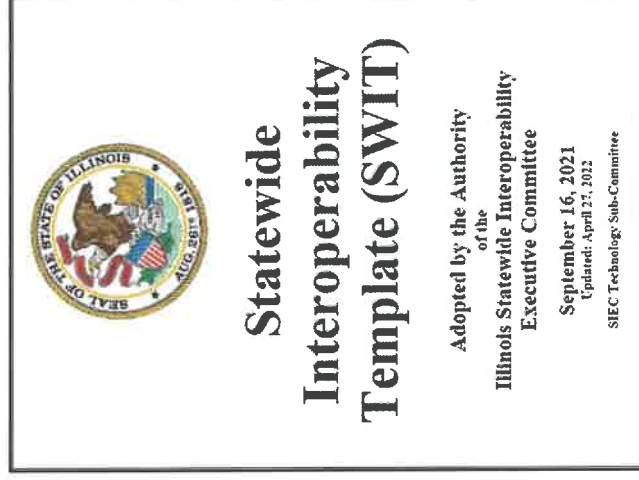
ILLINOIS STATEWIDE INTEROPERABILITY
EXECUTIVE COMMITTEE

SWIT ORIENTATION

Review of the SWIT

SWIT PROGRAMMING GUIDE

- VHF/UHF/700/800/STAR
COM21 PROGRAMMING
GUIDE
- Adopted Sept. 16, 2021,
and updated April 27,
2022



ILSIEC

ILLINOIS STATEWIDE INTEROPERABILITY
EXECUTIVE COMMITTEE

GOALS FOR IMPLEMENTATION

- Provide awareness and operational training to users; initial and ongoing training for interoperable communications is imperative for success and all public safety radio users should receive adequate initial and annual training regarding the SWIT and the operation of their communications equipment.
- Provide updates, programming requirements and programming guidance as set forth by the ILSIEC to all agencies and contractors approved to program radios



ILSIEC

ILLINOIS STATEWIDE INTEROPERABILITY
EXECUTIVE COMMITTEE

GENERAL POINTS ABOUT THE NEW SWIT

- ✓ Established “call” TGs
- ✓ Reorganized Regional TGs
- ✓ Backward Compatibility with the Legacy ITTF Template.
- ✓ Added Discipline-Specific TGs on STARCOM21 (e.g., Fire, Law, 9-1-1, T.E.R.T.)
- ✓ Expanded the number of Encrypted TGs
- ✓ Added “dormant” TGs on STARCOM21 to allow for expansion
- ✓ Includes VHF and UHF: National and Federal



ILSIEC

ILLINOIS STATEWIDE INTEROPERABILITY
EXECUTIVE COMMITTEE

BACKWARD COMPATIBILITY

ITTF / SWIT NAMING CROSSWALK

ZONE	CALLING			INCIDENT A			SECURE A			MABAS		
	SWIT Name	Legacy Name	ITTF Zone	SWIT Name	Legacy Name	ITTF Zone	SWIT Name	Legacy Name	ITTF Zone	SWIT Name	Legacy Name	ITTF Zone
Chan												
1	IL-CALL	IESMA	BA	IL-INC A1	INCIDENT1	BA	IL-SEC A1	SECURE1	BZ	MABAS	MABAS	BA
2	ILEAS	ILEAS	BA	IL-INC A2	INCIDENT2	BA	IL-SEC A2	SECURE2	BZ	MABAS SEC	MABASSEC	MABAS
3	MABAS	MABAS	BA	IL-INC A3	INCIDENT3	BA	IL-SEC A3	SECURE3	BZ	MABAS OPS1	OPS	MABAS
4	IDPH	IDPH	BA	IL-INC A4	INCIDENT4	BA	IL-SEC A4	SECURE4	BZ	MABAS OPS2	(NEW)	N/A
5	IPWMAN	IPWMAN	BA	IL-INC A5	INCIDENT5	BA	IL-SEC A5	SECURE5	BZ	MABAS OPS3E	OPS SEC	MABAS
6	EWA	NORTH A	BA	IL-INC A6	RGN 2A	BB	IL-SEC A6	SECURE6	BZ	MABAS OPS4E	(NEW)	N/A
7	IL-RGN 2	RGN 2B	BB	IL-INC A7	RGN 3A	BB	IL-SECLAW7	SECLAW1	BZ	IL-HZMT	HAZMAT	MABAS
8	IL-RGN 3	RGN 3B	BB	IL-INC A8	RGN 4A	BB	IL-SECLAW8	SECLAW2	BZ	IL-HZMT SEC	HZMT SEC	MABAS
9	IL-RGN 4	RGN 4B	BB	IL-INC A9	RGN 6A	BB	IL-SECLAW9	SECURE7	BZ	IL-TRT	TRT	MABAS
10	IL-RGN 6	RGN 6B	BB	IL-INC A10	RGN 7A	BB	IL-SECLAW10	SECURE8	BZ	IL-TRT SEC	TRT SEC	MABAS
11	IL-RGN 7	RGN 7B	BB	IL-INC A11	RGN 8A	BB	IL-SECFIRE11	SECFIRE1	BZ			
12	IL-RGN 8	RGN 8B	BB	IL-INC A12	RGN 9A	BB	IL-SECFIRE12	SECFIRE2	BZ			
13	IL-RGN 9	RGN 9B	BB	IL-INC A13	RGN 11A	BB	IL-SECEMA13	SECEMA1	BZ			
14	IL-RGN11	RGN 11B	BB	IL-INC A14	NORTH B	BA	IL-SECEMA14	SECEMA2	BZ			
15	IL-102A	SOUTH A	BA	IL-INC A15	CENTER A	BA	IL-SECDOT15	SECDOT1	BZ			
16	IL-102B	SOUTH B	BA	IL-INC A16	CENTER B	BA	IL-SECDOT16	SECDOT2	BZ			



ILSIEC

ILLINOIS STATEWIDE INTEROPERABILITY
EXECUTIVE COMMITTEE

SWIT PROGRAMMING GUIDE KEY ELEMENTS

- All 700/800 MHz mobile and portable radios should be programmed with the 700/800 MHz interoperability channels contained herein, regardless if you use STARCOM21 or other radio system as your primary.
- All STARCOM21 radios used by field personnel **must be programmed with the Calling, Incident A, Incident B and Reserve zones.**
- VHF and UHF users need to include VHF and UHF interop channels
- Users of independent 700/800 TRS should include channels of the simplex and repeated pairs that are found in the SWIT



IFEMA



SWIT PROGRAMMING GUIDE KEY ELEMENTS (Cont.)

- All new radios procured for use on the STARCOM21 system that include encryption must be equipped with AES-256 multi-key encryption. All AES-256 multi-key equipped field radios must be programmed with the SECURE A and SECURE B and SWIT-BY zones.
- Programming of encryption keys must be in compliance with SIEC policies and procedures. Law enforcement, fire and 9-1-1 keys have special restrictions. SIEC encryption keys must be used; local encryption keys are not permitted on SWIT defined interoperable frequencies.
- Encrypted channels listed in this template require P25 digital radios with AES-256 multi-key hardware encryption.



The "All Important" Common Patch Key

CKR 1

- In order to successfully create secure patches through the STARCOM system using encrypted talkgroups , it is necessary in almost all cases to utilize the correct CKR and encryption key also known as Common Patch Key 1 (CPK 1)
- CPK 1 is available through Motorola, SWIC office , The Encryption Working Group and other authorized distribution points.



SWIT PROGRAMMING GUIDE

KEY ELEMENTS (Cont.)

- Encryption may be used for VFED-IR, VFED-LE and UFED-LE channels identified in the SWIT with encryption as "Selectable". These are NTIA frequencies that are generally utilized by federal agencies. At the direction of and in partnership with a federal agency they may be used by a SLTT partner.
- If an agency desires to program these frequencies, radios should be programmed for selectable encryption using the SLN/CKR identified in the SWIT for the above channels.



ENCRYPTION



ILSIEC

ILLINOIS STATEWIDE INTEROPERABILITY
EXECUTIVE COMMITTEE

SAMPLE MABAS FIRE VHF & UHF TEMPLATE

Channel Position	VCALL Zone	VFIRE Zone	VMED Zone	VFED-IR Zone	UCALL Zone	UFED-IR Zone
1	VCALL10	IFERN	MERC1340	NC 1	UCALL40D	NC 2
2	VTAC11	IFERN2	MERC1400	IR 1	UTAC41D	IR 10
3	VTAC12	VFIRE21	VMED28	IR 2	UTAC42D	IR 11
4	VTAC13	VFIRE22	VMED29	IR 3	UTAC43D	IR 12
5	VTAC14	VFIRE23	VSAR16	IR 4	UCALL40	IR 13
6	VTAC33	VFIRE24	RESERVED	IR 5	UTAC41	IR 14
7	VTAC34	VFIRE25	RESERVED	IR 6	UTAC42	IR 15
8	VTAC35	VFIRE26	RESERVED	IR 7	UTAC43	IR 16
9	VTAC36	IREACH	RESERVED	IR 8	RESERVED	IR 17
10	VTAC37	ESMARN	RESERVED	IR 9	RESERVED	IR 18
11	VTAC38	GRAY FG	RESERVED	CG-COM-N	RESERVED	RESERVED
12	STL CALL	BLACK FG	RESERVED	CG-COM-C	RESERVED	RESERVED
13	STL TAC	GOLD FG	RESERVED	CG-COM-S	RESERVED	RESERVED
14	IEMA VHF1	BLUE FG	RESERVED	CG-TAC-N	RESERVED	RESERVED
15	ESMARN	WHITE FG	RESERVED	CG-TAC-C	RESERVED	RESERVED
16	IREACH	RED FG	RESERVED	CG-TAC-S	RESERVED	RESERVED



ILSIEC

ILLINOIS STATEWIDE INTEROPERABILITY
EXECUTIVE COMMITTEE

SAMPLE MABAS FIRE 7/800 MHZ TEMPLATE

Channel Position	SWIT-BC Zone	SWIT-BD Zone	SWIT-BE Zone	SWIT-BF Zone	SWIT-BG Zone	SWIT-BH Zone	SWIT-BI Zone	SWIT-BJ Zone	SECURE-BY Zone
1	8CALL90D	7CALL50D	7MOB59D	7CALL70D	7MOB79D	7FTAC1D	7MTAC9D	7AG58D	7MOB59DE
2	8TAC91D	7TAC51D	7DATA69D	7TAC71D	7DATA89D	7FTAC2D	A7-US-01D	7AG60D	7MOB79DE
3	8TAC92D	7TAC52D	7LAW61D	7TAC72D	7LAW81D	7FTAC3D	A7-US-02D	7AG67D	7LAW81DE
4	8TAC93D	7TAC53D	7LAW62D	7TAC73D	7LAW82D	7GTAC4D	A7-US-03D	7AG68D	7LAW82DE
5	8TAC94D	7TAC54D	7FIRE63D	7TAC74D	7FIRE83D	7GTAC5D	7MTAC9	7AG78D	7FIRE83DE
6	8CALL90	7TAC55D	7FIRE64D	7TAC75D	7FIRE84D	7LTAC6D	A7-US-01	7AG80D	7FIRE84DE
7	8TAC91	7TAC56D	7MED65D	7TAC76D	7MED86D	7LTAC7D	A7-US-02	7AG85D	7MED86DE
8	8TAC92	7GTAC57D	7MED66D	7GTAC77D	7MED87D	7LTAC8D	A7-US-03	7AG88D	7MED87DE
9	8TAC93	7CALL50	7MOB59	7CALL70	7MOB79	7FTAC1	7-US-01D	7AG58	7MOB59E
10	8TAC94	7TAC51	7DATA69	7TAC71	7DATA89	7FTAC2	7-US-02D	7AG60	7MOB79E
11	RESERVED	7TAC52	7LAW61	7TAC72	7LAW81	7FTAC3	7-US-03D	7AG67	7LAW81E
12	RESERVED	7TAC53	7LAW62	7TAC73	7LAW82	7GTAC4	7-US-01	7AG68	7LAW82E
13	RESERVED	7TAC54	7FIRE63	7TAC74	7FIRE83	7GTAC5	7-US-02	7AG78	7FIRE83E
14	RESERVED	7TAC55	7FIRE64	7TAC75	7FIRE84	7LTAC6	7-US-03	7AG80	7FIRE84E
15	RESERVED	7TAC56	7MED65	7TAC76	7MED86	7LTAC7	RESERVED	7AG85	7MED86E
16	RESERVED	7GTAC57	7MED66	7GTAC77	7MED87	7LTAC8	RESERVED	7AG88	7MED87E

SAMPLE MABAS FIRE STARCOM21 TEMPLATE

Channel Position	CALLING Zone	INCIDENT A Zone	INCIDENT B Zone	RESERVE A Zone	SECURE A Zone	SECURE B Zone	MABAS Zone
1	IL-CALL	IL-INC A1	IL-INC B1	IL-RSV 1	IL-SEC A1	IL-SEC B1	MABAS
2	ILEAS	IL-INC A2	IL-INC B2	IL-RSV 2	IL-SEC A2	IL-SEC B2	MABAS SEC
3	MABAS	IL-INC A3	IL-INC B3	IL-RSV 3	IL-SEC A3	IL-SEC B3	MABAS OPS1
4	IDPH	IL-INC A4	IL-INC B4	IL-RSV 4	IL-SEC A4	IL-SEC B4	MABAS OPS2
5	IPWMAN	IL-INC A5	IL-INC B5	IL-RSV 5	IL-SEC A5	IL-SEC B5	MABAS OPS3E
6	EMA	IL-INC A6	IL-INC B6	IL-RSV 6	IL-SEC A6	IL-SEC B6	MABAS OPS4E
7	IL-RGN 2	IL-INC A7	IL-INC B7	IL-RSV 7	IL-SECLAW7	IL-SEC B7	RESERVED
8	IL-RGN 3	IL-INC A8	IL-INC B8	IL-RSV 8	IL-SECLAW8	IL-SEC B8	IL-HZMT
9	IL-RGN 4	IL-INC A9	IL-INC B9	IL-RSV 9	IL-SECLAW9	IL-SEC B9	IL-HZMT SEC
10	IL-RGN 6	IL-INC A10	IL-INC B10	IL-RSV 10	IL-SECLAW10	IL-SEC B10	IL-TRT
11	IL-RGN 7	IL-INC A11	IL-INC B11	IL-RSV 11	IL-SECFIRE11	IL-SEC B11	IL-TRT SEC
12	IL-RGN 8	IL-INC A12	IL-INC B12	IL-RSV 12	IL-SECFIRE12	IL-SEC B12	RESERVED
13	IL-RGN 9	IL-INC A13	IL-INC B13	IL-RSV 13	IL-SECEMA13	IL-SEC B13	RESERVED
14	IL-RGN11	IL-INC A14	IL-INC B14	IL-RSV 14	IL-SECEMA14	IL-SEC B14	RESERVED
15	IL-102A	IL-INC A15	IL-INC B15	IL-RSV 15	IL-SEC DOT15	IL-SEC B15	RESERVED
16	IL-102B	IL-INC A16	IL-INC B16	IL-RSV 16	IL-SEC DOT16	IL-SEC B16	RESERVED

INTEROPERABILITY
TTEE

KEY TAKE-AWAYS

- ✓ The goal is to eliminate and manage the science, training, and practical use of the radio as a logical and organized plan.
- ✓ Trainers, managers, radio technicians, COMLs, COMU, will help guide the various disciplines.
- ✓ Use the backward-compatibility to the legacy IITF template as a fall-back.
- ✓ The BA series template will be deprecated by December 31, 2025 and the SWIFT template should be fully implemented in all radios.
- ✓ Consider your programming needs for other equipment such as logging recorders, consoles and other resources.

Goals for Fire Departments in Illinois

- Program VHF Radios to include MABAS Frequencies:
 - IFERN & IFERN 2
 - RED, WHITE, BLUE, GOLD, BLACK & GRAY Firegrounds
- Program VHF Radios for State & National Mutual Aid & Interoperability Frequencies
 - Create Radio Zones that follow the SWIT Document



ILSIEC

ILLINOIS STATEWIDE INTEROPERABILITY
EXECUTIVE COMMITTEE

Goals for Fire Departments in Illinois

- Program UHF Radios to include National Interoperability frequencies as listed in the SWIT.
- Program 7/800 MHz radios to include National Interoperability frequencies as listed in the SWIT.
- Update STARCOM21 radios, new names and new talkgroups
 - Encrypted Radios (AES256) can include most MABAS encrypted talkgroups



ILLINOIS STATEWIDE INTEROPERABILITY
EXECUTIVE COMMITTEE

JUST ROLL WITH SWIT

By December 31, 2025, SWIT implementation will be complete.

1. Review the template and recommended visor cards.
2. Get your radios programmed.
3. Load the common patch key CKR1, aka CPK1.



FIRE SERVICE VISOR CARD (FRONT)

MABAS / FIRE - EMS Visor Card												Page 1
ZONE	VCALL	UCALL	VFIRE	VMED	VFED-IR	UFED-IR	SWIT-BC	SWIT-BD	SWIT-BE	SWIT-BF	SWIT-BG	
CHAN												
1	VCALL10	UCALL40D	IFERN	MERC1340	NC 1	NC 2	8CALL90D	7CALL5D	7MOB59D	7CALL70D	7MOB79D	
2	VTAC11	UTAC41D	IFERN2	MERC1400	IR 1	IR 10	8TAC91D	7TAC51D	7DATA69D	7TAC71D	7DATA89D	
3	VTAC12	UTAC42D	VFIRE21	VMED28	IR 2	IR 11	8TAC92D	7TAC52D	7LAW61D	7TAC72D	7LAW81D	
4	VTAC13	UTAC43D	VFIRE22	VMED29	IR 3	IR 12	8TAC93D	7TAC53D	7LAW62D	7TAC73D	7LAW82D	
5	VTAC14	UCALL40	VFIRE23	VSAR16	IR 4	IR 13	8TAC94D	7TAC54D	7FIRE63D	7TAC74D	7FIRE83D	
6	VTAC33	UTAC41	VFIRE24	RESERVED	IR 5	IR 14	8CALL90	7TAC55D	7FIRE64D	7TAC75D	7FIRE84D	
7	VTAC34	UTAC42	VFIRE25	RESERVED	IR 6	IR 15	8TAC91	7TAC56D	7MED65D	7TAC76D	7MED86D	
8	VTAC35	UTAC43	VFIRE26	RESERVED	IR 7	IR 16	8TAC92	7GTAC57D	7MED66D	7GTAC77D	7MED87D	
9	VTAC36	RESERVED	IREACH	RESERVED	IR 8	IR 17	8TAC93	7CALL50	7MOB59	7CALL70	7MOB79	
10	VTAC37	RESERVED	ESMARN	RESERVED	IR 9	IR 18	8TAC94	7TAC51	7DATA69	7TAC71	7DATA89	
11	VTAC38	RESERVED	GRAY FG	RESERVED	CG-COM-N	RESERVED	RESERVED	7TAC52	7LAW61	7TAC72	7LAW81	
12	STL CALL	RESERVED	BLACK FG	RESERVED	CG-COM-C	RESERVED	RESERVED	7TAC53	7LAW62	7TAC73	7LAW82	
13	STL TAC	RESERVED	GOLD FG	RESERVED	CG-COM-S	RESERVED	RESERVED	7TAC54	7FIRE63	7TAC74	7FIRE83	
14	IEMA VHF1	RESERVED	BLUE FG	RESERVED	CG-TAC-N	RESERVED	RESERVED	7TAC55	7FIRE64	7TAC75	7FIRE84	
15	ESMARN	RESERVED	WHITE FG	RESERVED	CG-TAC-C	RESERVED	RESERVED	7TAC56	7MED65	7TAC76	7MED86	
16	IREACH	RESERVED	RED FG	RESERVED	CG-TAC-S	RESERVED	RESERVED	7GTAC57	7MED66	7GTAC77	7MED87	

FIRE SERVICE VISOR CARD (REAR)

MABAS / FIRE - EMS Visor Card													Page 2
ZONE	SWIT-BH	SWIT-BI	SWIT-BJ	SWIT-BY	CALLING	INCIDENT A	INCIDENT B	RESERVE A	SECURE A	SECURE B	MABAS		
CHAN				** See Note					** See Note		** See Note		
1	7FTAC1D	7MTAC9D	7AG58D	7MOB59DE	IL-CALL	IL-INCA1	IL-INCB1	IL-RSV 1	IL-SECA1	IL-SECB1	MABAS		
2	7FTAC2D	A7-US-01D	7AG60D	7MOB79DE	ILEAS	IL-INCA2	IL-INCB2	IL-RSV 2	IL-SECA2	IL-SECB2	MABAS SEC		
3	7FTAC3D	A7-US-02D	7AG67D	7LAW81DE	MABAS	IL-INCA3	IL-INCB3	IL-RSV3	IL-SECA3	IL-SECB3	MABAS OPS1		
4	7GTAC4D	A7-US-03D	7AG68D	7LAW82DE	IDPH	IL-INCA4	IL-INCB4	IL-RSV 4	IL-SECA4	IL-SECB4	MABAS OPS2		
5	7GTAC5D	7MTAC9	7AG78D	7FIRE83DE	IPWMAN	IL-INCA5	IL-INCB5	IL-RSV 5	IL-SECA5	IL-SECB5	MABAS OPS3E		
6	7LTAC6D	A7-US-01	7AG80D	7FIRE84DE	EMA	IL-INCA6	IL-INCB6	IL-RSV 6	IL-SECA6	IL-SECB6	MABAS OPS4E		
7	7LTAC7D	A7-US-02	7AG85D	7MED86DE	IL-RGN 2	IL-INCA7	IL-INCB7	IL-RSV 7	IL-SECLAW7	IL-SECB7	RESERVED		
8	7LTAC8D	A7-US-03	7AG88D	7MED87DE	IL-RGN 3	IL-INCA8	IL-INCB8	IL-RSV 8	IL-SECLAW8	IL-SECB8	IL-HZMT		
9	7FTAC1	7-US-01D	7AG58	7MOB59E	IL-RGN 4	IL-INCA9	IL-INCB9	IL-RSV 9	IL-SECLAW9	IL-SECB9	IL-HZMT SEC		
10	7FTAC2	7-US-02D	7AG60	7MOB79E	IL-RGN 6	IL-INCA10	IL-INCB10	IL-RSV 10	IL-SECLAW10	IL-SECB10	IL-TRT		
11	7FTAC3	7-US-03D	7AG67	7LAW81E	IL-RGN 7	IL-INCA11	IL-INCB11	IL-RSV 11	IL-SECFIRE11	IL-SECB11	IL-TRT SEC		
12	7GTAC4	7-US-01	7AG68	7LAW82E	IL-RGN 8	IL-INCA12	IL-INCB12	IL-RSV 12	IL-SECFIRE12	IL-SECB12	RESERVED		
13	7GTAC5	7-US-02	7AG78	7FIRE83E	IL-RGN 9	IL-INCA13	IL-INCB13	IL-RSV 13	IL-SECEMA13	IL-SECB13	RESERVED		
14	7LTAC6	7-US-03	7AG80	7FIRE84E	IL-RGN 11	IL-INCA14	IL-INCB14	IL-RSV 14	IL-SECEMA14	IL-SECB14	RESERVED		
15	7LTAC7	RESERVED	7AG85	7MED86E	IL-102 A	IL-INCA15	IL-INCB15	IL-RSV 15	IL-SECDOT15	IL-SECB15	RESERVED		
16	7LTAC8	RESERVED	7AG88	7MED87E	IL-102 B	IL-INCA16	IL-INCB16	IL-RSV 16	IL-SECDOT16	IL-SECB16	RESERVED		
** The programming and use of certain frequencies, talk groups, and encryption keys is restricted to specific disciplines. Please refer to the SWIT													

WHEN IN DOUBT

If you have questions or comments about the SWIT, TG use, or interoperability in general... please contact:

- The Statewide Interoperability Coordinator Matthew Miller or
- The Deputy Coordinator Colin Vasconcelles.

Email: ema.swic@illinois.gov

OPS Center Phone: 217-782-7860

NOTE: Almost all TGs in the SWIT need pre-approval for event use.



MABAS FREQUENCY/TALKGROUP QUESTIONS

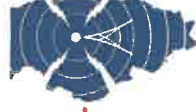
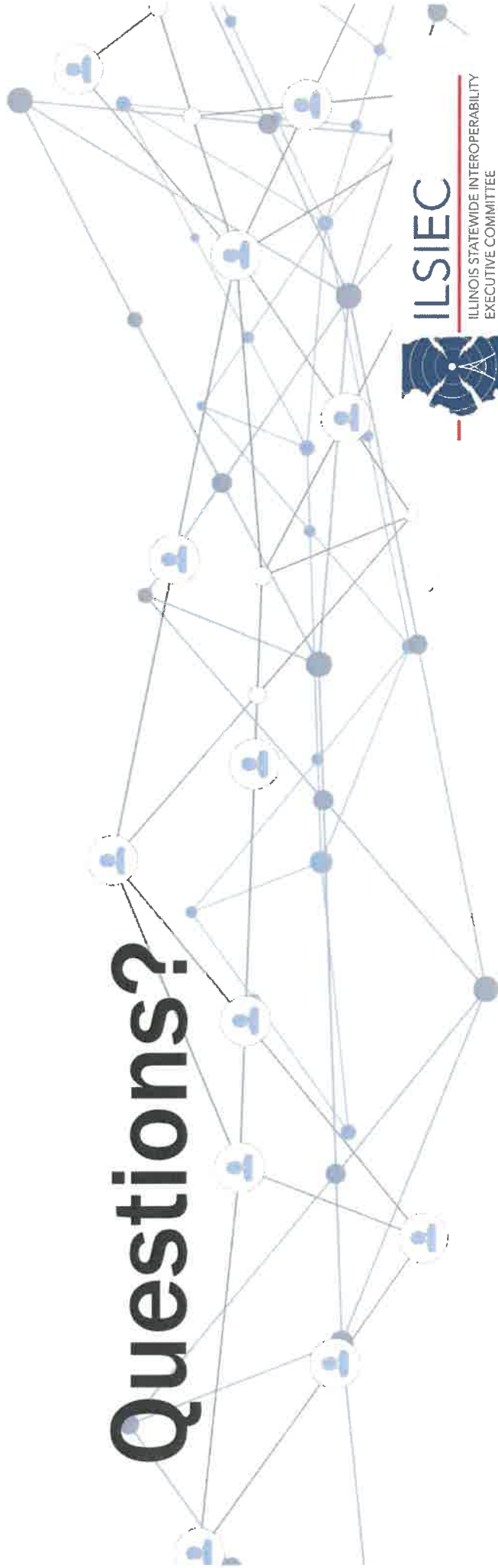
If you have questions or comments about the SWIT, MABAS frequencies, TG use, or interoperability in general... please contact:

- Paul Maplethorpe
MABAS Communications
maplethorpe@mabas-il.org






Questions?



ILSIEC

ILLINOIS STATEWIDE INTEROPERABILITY
EXECUTIVE COMMITTEE





**Thank you for your
dedication to operability and
interoperability!**



ILSIEC

ILLINOIS STATEWIDE INTEROPERABILITY
EXECUTIVE COMMITTEE

ZONE	SWIT-BH	SWIT-BI	SWIT-BI	SWIT-BI	SWIT-BY	CALLING	INCIDENT A	INCIDENT B	RESERVE A	SECURE A	SECURE B	MABAS
CHAN					** See Note					** See Note		** See Note
1	7FTAC1D	7MTAC9D	7AG59D	7MOB59D	7MOB59DE	IL-CALL	IL-INC A1	IL-INC B1	IL-RSV 1	IL-SECA1	IL-SEC B1	MABAS
2	7FTAC2D	A7-US-01D	7AG60D	7MOB79DE	7MOB79DE	ILEAS	IL-INC A2	IL-INC B2	IL-RSV 2	IL-SECA2	IL-SEC B2	MABAS SEC
3	7FTAC3D	A7-US-02D	7AG67D	7LAW81DE	7LAW81DE	MABAS	IL-INC A3	IL-INC B3	IL-RSV3	IL-SECA3	IL-SEC B3	MABAS OPS1
4	7GTAC4D	A7-US-03D	7AG68D	7LAW82DE	7LAW82DE	IDPH	IL-INC A4	IL-INC B4	IL-RSV 4	IL-SECA4	IL-SEC B4	MABAS OPS2
5	7GTAC5D	7MTAC9	7AG78D	7FIRE83DE	7FIRE83DE	IPWMAN	IL-INC A5	IL-INC B5	IL-RSV 5	IL-SECA5	IL-SEC B5	MABAS OPS3E
6	7LIAC6D	A7-US-01	7AG80D	7FIRE84DE	7FIRE84DE	EMA	IL-INC A6	IL-INC B6	IL-RSV 6	IL-SECA6	IL-SEC B6	MABAS OPS4E
7	7LIAC7D	A7-US-02	7AG85D	7MED86DE	7MED86DE	IL-RGN 2	IL-INC A7	IL-INC B7	IL-RSV 7	IL-SECLAW7	IL-SEC B7	RESERVED
8	7LIAC8D	A7-US-03	7AG88D	7MED87DE	7MED87DE	IL-RGN 3	IL-INC A8	IL-INC B8	IL-RSV 8	IL-SECLAW8	IL-SEC B8	IL-HZMT
9	7FTAC1	7-US-01D	7AG58	7MOB59E	7MOB59E	IL-RGN 4	IL-INC A9	IL-INC B9	IL-RSV 9	IL-SECLAW9	IL-SEC B9	IL-HZMT SEC
10	7FTAC2	7-US-02D	7AG60	7MOB79E	7MOB79E	IL-RGN 6	IL-INC A10	IL-INC B10	IL-RSV 10	IL-SECLAW10	IL-SEC B10	IL-TRT
11	7FTAC3	7-US-03D	7AG67	7LAW81E	7LAW81E	IL-RGN 7	IL-INC A11	IL-INC B11	IL-RSV 11	IL-SECIRE11	IL-SEC B11	IL-TRT SEC
12	7GTAC4	7-US-01	7AG68	7LAW82E	7LAW82E	IL-RGN 8	IL-INC A12	IL-INC B12	IL-RSV 12	IL-SECIRE12	IL-SEC B12	RESERVED
13	7GTAC5	7-US-02	7AG78	7FIRE83E	7FIRE83E	IL-RGN 9	IL-INC A13	IL-INC B13	IL-RSV 13	IL-SECENMA13	IL-SEC B13	RESERVED
14	7LIAC6	7-US-03	7AG80	7FIRE84E	7FIRE84E	IL-RGN 11	IL-INC A14	IL-INC B14	IL-RSV 14	IL-SECENMA14	IL-SEC B14	RESERVED
15	7LIAC7	RESERVED	7AG85	7ME D88E	7ME D88E	IL-102 A	IL-INC A15	IL-INC B15	IL-RSV 15	IL-SECODT15	IL-SEC B15	RESERVED
16	7LIAC8	RESERVED	7AG88	7ME D87E	7ME D87E	IL-102 B	IL-INC A16	IL-INC B16	IL-RSV 16	IL-SECODT16	IL-SEC B16	RESERVED

** The programming and use of certain frequencies, talkgroups, and encryption keys is restricted to specific disciplines. Please refer to the SWIT

ZONE	SWIT-BG	SWIT-BF	SWIT-BE	SWIT-BD	SWIT-BC	SWIT-IR	UFED-IR	VFED-IR	VMED	VFIRE	UCALL	VCALL	ZONE
1	7MOB79D	7CALL70D	7MOB59D	7CALL5D	8CALL90D	NC 2	NC 1	MERCIB40	IFERN	UCALL40D	UCALL10	VCALL10	1
2	7DATA89D	7TAC71D	7DATA69D	7TAC51D	8TAC91D	IR 10	IR 1	MERCIC400	IFERN2	UTAC41D	VTAC11	VTAC11	2
3	7LAW81D	7TAC72D	7LAW61D	7TAC52D	8TAC92D	IR 11	IR 2	VMED28	VFIRE21	UTAC42D	VTAC12	VTAC12	3
4	7LAW82D	7TAC73D	7LAW62D	7TAC53D	8TAC93D	IR 12	IR 3	VMED29	VFIRE22	UTAC43D	VTAC13	VTAC13	4
5	7FIRE83D	7TAC74D	7FIRE63D	7TAC54D	8TAC94D	IR 13	IR 4	VSAR16	VFIRE23	UCALL40	VTAC14	VTAC14	5
6	7FIRE84D	7TAC75D	7FIRE64D	7TAC55D	8CALL90	IR 14	IR 5	RESERVED	VFIRE24	UTAC41	VTAC33	VTAC33	6
7	7MED86D	7TAC76D	7MED65D	7TAC56D	8TAC91	IR 15	IR 6	RESERVED	VFIRE25	UTAC42	VTAC34	VTAC34	7
8	7MED87D	7GTAC77D	7MED66D	7GTAC57D	8TAC92	IR 16	IR 7	RESERVED	VFIRE26	UTAC43	VTAC35	VTAC35	8
9	7MOB79	7CALL70	7MOB59	7CALL50	8TAC93	IR 17	IR 8	RESERVED	IREACH	RESERVED	VTAC36	VTAC36	9
10	7DATA89	7TAC71	7DATA69	7TAC51	8TAC94	IR 18	IR 9	RESERVED	ESMARN	RESERVED	VTAC37	VTAC37	10
11	7LAW81	7TAC72	7LAW61	7TAC52	RESERVED	RESERVED	CG-COM-N	RESERVED	GRAY FG	RESERVED	VTAC38	VTAC38	11
21	7LAW82	7TAC73	7LAW62	7TAC53	RESERVED	RESERVED	CG-COM-C	RESERVED	BLACK FG	RESERVED	STL CALL	STL CALL	21
13	7FIRE83	7TAC74	7FIRE63	7TAC54	RESERVED	RESERVED	CG-COM-S	RESERVED	GOLD FG	RESERVED	STL TAC	STL TAC	13
41	7FIRE84	7TAC75	7FIRE64	7TAC55	RESERVED	RESERVED	CG-TAC-N	RESERVED	BLUE FG	RESERVED	1HFV	1HFV	41
51	7MED86	7TAC76	7MED65	7TAC56	RESERVED	RESERVED	CG-TAC-C	RESERVED	WHITE FG	RESERVED	RESMARN	RESMARN	51
61	7MED87	7GTAC77	7MED66	7GTAC57	RESERVED	RESERVED	CG-TAC-S	RESERVED	RED FG	RESERVED	IREACH	IREACH	61

ITTF / SWIT NAMING CROSSWALK

ZONE	CALLING			INCIDENT A			SECURE A			MABAS		
	Chan	SWIT Name	Legacy Name	ITTF Zone	SWIT Name	Legacy Name	ITTF Zone	SWIT Name	Legacy Name	ITTF Zone	SWIT Name	Legacy Name
1	IL-CALL	IESMA	BA	IL-INC A1	INCIDENT1	BA	IL-SEC A1	SECURE1	BZ	MABAS	MABAS	BA
2	ILEAS	ILEAS	BA	IL-INC A2	INCIDENT2	BA	IL-SEC A2	SECURE2	BZ	MABAS SEC	MABASSEC	MABAS
3	MABAS	MABAS	BA	IL-INC A3	INCIDENT3	BA	IL-SEC A3	SECURE3	BZ	MABAS OPS1	OPS	MABAS
4	IDPH	IDPH	BA	IL-INC A4	INCIDENT4	BA	IL-SEC A4	SECURE4	BZ	MABAS OPS2	(NEW)	N/A
5	IPW/MAN	IPW/MAN	BA	IL-INC A5	INCIDENT5	BA	IL-SEC A5	SECURE5	BZ	MABAS OPS3E	OPS SEC	MABAS
6	EMA	NORTH A	BA	IL-INC A6	RGN 2A	BB	IL-SEC A6	SECURE6	BZ	MABAS OPS4E	(NEW)	N/A
7	IL-RGN 2	RGN 2B	BB	IL-INC A7	RGN 3A	BB	IL-SECLAW7	SECLAW1	BZ			
8	IL-RGN 3	RGN 3B	BB	IL-INC A8	RGN 4A	BB	IL-SECLAW8	SECLAW2	BZ	IL-HZMT	HAZMAT	MABAS
9	IL-RGN 4	RGN 4B	BB	IL-INC A9	RGN 6A	BB	IL-SECLAW9	SECURE7	BZ	IL-HZMT SEC	HZMT SEC	MABAS
10	IL-RGN 6	RGN 6B	BB	IL-INC A10	RGN 7A	BB	IL-SECLAW10	SECURE8	BZ	IL-TRT	TRT	MABAS
11	IL-RGN 7	RGN 7B	BB	IL-INC A11	RGN 8A	BB	IL-SECURE11	SECURE1	BZ	IL-TRT SEC	TRT SEC	MABAS
12	IL-RGN 8	RGN 8B	BB	IL-INC A12	RGN 9A	BB	IL-SECURE12	SECURE2	BZ			
13	IL-RGN 9	RGN 9B	BB	IL-INC A13	RGN 11A	BB	IL-SECCEMA13	SECCEMA1	BZ			
14	IL-RGN11	RGN 11B	BB	IL-INC A14	NORTH B	BA	IL-SECCEMA14	SECCEMA2	BZ			
15	IL-102A	SOUTH A	BA	IL-INC A15	CENTER A	BA	IL-SEC DOT15	SEC DOT1	BZ			
16	IL-102B	SOUTH B	BA	IL-INC A16	CENTER B	BA	IL-SEC DOT16	SEC DOT2	BZ			