

# MABAS ILLINOIS



## Resource Guide

JANUARY 2025

## Decontamination (Decon) Vehicle – 25 Statewide



Mass decontamination – up to 200 people with supplies on board. Shower and hygiene facilities. Exterior, under-awning, misting nozzles for cooling or mass decontamination.

**Locations:** Divisions and MABAS Readiness Center

|    |    |    |    |    |
|----|----|----|----|----|
| 3  | 4  | 6  | 8  | 10 |
| 12 | 15 | 19 | 20 | 21 |
| 22 | 24 | 26 | 28 | 31 |
| 32 | 36 | 43 | 44 | 45 |
| 46 | 47 | 48 | 49 | 55 |

## Warehouse Trailer – 7 Statewide



18,000 items - various supplies, including generators, chain saws, shovels, brooms, cots, sleeping bags, tarps, hand tools, gloves, goggles, trash cans, etc.

**Location by Division:**

|    |    |    |
|----|----|----|
| 10 | 28 | 31 |
| 35 | 45 | 48 |

MRC

## Air Support Unit (ASU) – 11 Statewide



Compressor/manifold system with adaptors for all SCBA and SCUBA.

**Location by Division:**

|    |    |    |    |
|----|----|----|----|
| 1  | 3  | 5  | 16 |
| 24 | 25 | 31 | 35 |
| 41 | 45 | 54 |    |



### Generator Light Tower (GLT) – 82 Statewide



20 Kw diesel-powered with 4 – 1000 w floodlights.

**Locations:** Each division (Cook County divisions have 2 units each), US&R, and CCSRT.

---

### Expedient Shelter System – 68



Trailer with one Western Shelter tent and HVAC. Space for additional equipment. Each tent accommodates 20 responders.

**Location:** Each division.

---

### All Terrain Utility Vehicle (ATV) – 71



6 X 6 Polaris Ranger on trailer. Can tow its own trailer.

**Location:** Each division, US&R (2, including 1 for medical transportation), CCSRT.

### Mobile Ventilation Unit (MVU) – 8 Statewide



100 hp fan motor on elevating, rotating, and tilting stalk. Used for hi-rise ventilation, confined space ventilation, mass decontamination/cooling (with attachment for hose), toxic gas dissolution, etc.

**Location by Division:**

|    |    |    |    |
|----|----|----|----|
| 1  | 8  | 10 | 27 |
| 28 | 32 | 45 | 48 |

### Tent City – 3



Semi-trailer with 10 Western Shelter 19' X 35' tents, HVAC, cots and accessories. Built in generator to power all ten tents. Accommodates 200 responders.

**Location:** MABAS Readiness Center – 3 trailers

### Double Decker Boat Package



One inflatable and one rigid hull boat with 40 hp motors and safety/rescue equipment

**Locations:** Divisions and US&R (2)

|    |       |    |    |
|----|-------|----|----|
| 1  | 2     | 3  | 4  |
| 5  | 8     | 12 | 15 |
| 16 | 19    | 24 | 33 |
| 36 | 45/68 | 56 |    |

### Inflatable Rescue Boats and Trailer – 1



Contains 4 Inflatable Rescue Boats (IRB's) and boat motors to support a statewide or long-term incident.

**Location:** MABAS Readiness Center

---

### Mission Support Unit (MSU) – 4



Mobile office space for Incident Command function, credentialing, etc. On board generator, heat, A/C, etc. 4 Units Statewide.

**Locations:** South, Central, North-West, and MABAS Readiness Center.

---

### Utility Trailer – 2



**Location:** MABAS Readiness Center



### Incident Management (IMAT) Supply Trailer



Carries incident management forms and supplies for deployed teams.

**Location:** Divisions

---

### Utility Truck – 2



General use heavy duty box utility truck.

**Location:** MABAS Readiness Center

- 14' Box with 4 passenger cab
- 24' Box with 2 passenger cab

---

### EMS Support – Morgue Truck – 1



50 patient backboards, field morgue, medical examiner suite/supplies, 100 human remain pouches.

**Location:** MABAS Readiness Center

## Mechanic's Vehicle and Fuel Trailer – 1



Holds 1,200 gallons of fuel.

**Location:** MABAS Readiness Center

---

## EMS Triage / Treatment Vehicle – 1



US&R asset with 3 fully equipped treatment suites, dual equipped ALS capability.

**Location:** MABAS Readiness Center

---

## Passenger Bus – 1



- The function of this vehicle is to move first responders for incidents responses.
- This vehicle is primarily reserved for use by the Illinois Urban Search and Rescue (US&R) Task Force, IL-TF1.
- This vehicle is able to hold twenty-five (25) passengers plus one (1) driver max.
- Bus drivers must possess a valid driver's license with a passenger endorsement.

**Location:** MABAS Readiness Center

### Passenger Van – 1



- The function of this vehicle is to move first responders for incidents responses.
- The vehicle is able to hold eleven (11) passengers plus one (1) driver max.

**Location:** MABAS Readiness Center

---

### Stake Bed Truck - 2



Stake bed used to transport equipment and gear.

**Location:** MABAS Readiness Center

---

### Can Trailer



For function groups within US&R.

**Location:** MABAS Readiness Center



### K9 Team Vehicle



Two to six K9 live find search dogs are available to deploy in this specially designed truck-trailer combination that provides for safety, environmental control, and supplies for them.

**Location:** MABAS Readiness Center

### Remotely Operated Vehicle (ROV) - 3



Remotely operated underwater high-resolution imaging device, sonar helps locate and navigate to victims even in zero visibility; allows operator to manipulate interlocking saw to retrieve victims or evidence.

**Locations by Division:**

1            3            24

### Podrunner - 5

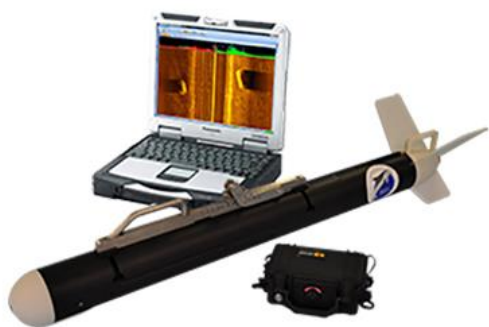


Podrunner portable (rolling) track-carried command desks for use by MABAS Incident Management Teams or others for exercises, incidents, and planned events.

**Locations by Division:**

4            15            45            68            MRC

## Side Scan Sonar



The side scan sonar system uses a “tow fish” to search large areas quickly and creates an image of the seafloor regardless of water clarity. The tow fish is positioned in the water off the side of a watercraft vessel as it sends and receives soundwaves which are then processed by a computer.

### Location by Division:

|    |    |    |    |    |
|----|----|----|----|----|
| 1  | 3  | 4  | 5  | 15 |
| 16 | 24 | 33 | 36 | 56 |

## Sector Scan Sonar



The sector scan HD sonar head is deployed to the bottom on a tripod. The system is operated from a laptop computer and high-resolution images are produced as the unit scans in a 360° view. Scanning results allow real time conditions that provide diver coordination and maximizes diver safety in order to fulfill rescue and recovery operations.

### Locations by Division:

|    |       |    |    |    |
|----|-------|----|----|----|
| 1  | 2     | 3  | 4  | 5  |
| 8  | 12    | 15 | 16 | 19 |
| 36 | 45/68 | 56 |    |    |

## Urban Search & Rescue Task Force (US&R)



The NIMS Type 1 US&R Task Force is made up of 200 members and deploys with a 70-person roster (with 10 transportation specialists).

Self-sustaining for 72 hours.

Provides heavy construction search and rescue capabilities. It has internal planning, logistics, structural stability assessment, medical, hazardous materials monitoring, and water/Swiftwater capabilities.

### Hazardous Materials Team (HazMat) – 31

10-person statewide deployable team with monitoring/detection, containment, and mitigation of up to Level A Hazardous Materials. All teams are trained and equipped identically.



**Location by Divisions:**

|    |    |    |    |    |    |       |    |
|----|----|----|----|----|----|-------|----|
| 1  | 3  | 4  | 8  | 9  | 10 | 11    | 12 |
| 13 | 15 | 16 | 17 | 19 | 20 | 21    | 25 |
| 26 | 28 | 31 | 32 | 35 | 36 | 40    | 41 |
| 42 | 43 | 45 | 46 | 47 | 48 | 50/56 |    |

### Technical Rescue Team (TRT) – 29

10-person statewide deployable team with collapse, high angle, confined space, and below grade rescue capability. All teams are trained and equipped identically.



**Location by Divisions:**

|    |    |    |    |
|----|----|----|----|
| 1  | 2  | 3  | 4  |
| 6  | 8  | 9  | 11 |
| 12 | 13 | 15 | 16 |
| 19 | 21 | 25 | 27 |
| 28 | 32 | 36 | 41 |
| 43 | 44 | 45 | 46 |
| 48 |    |    |    |



### Subsurface (Dive) Water Rescue Team – 16



Statewide deployable Water Rescue Team with the primary function of subsurface rescue and recovery.

**Location by Division:**

|    |    |       |    |
|----|----|-------|----|
| 1  | 2  | 3     | 4  |
| 5  | 8  | 9     | 12 |
| 15 | 16 | 19    | 24 |
| 33 | 36 | 45/68 | 56 |

### Swiftwater / Flood Search and Rescue Team – 2



FEMA compliant Swiftwater / Flood Search and Rescue Team. Provides swiftwater rescue, boat operations, search management, logistics, and communications capabilities.

**Locations:** MRC (CCSRT and US&R)